

Prospect Creek Restoration Project at Konnemanns Bridge

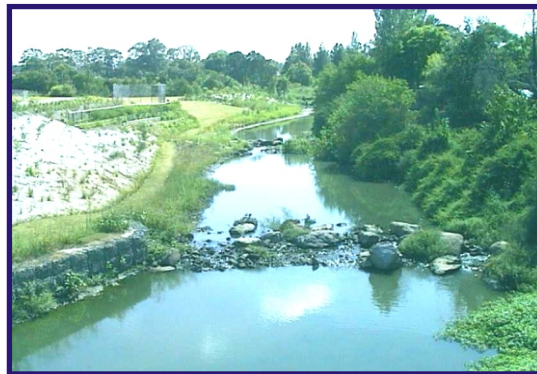
In 1997 a new bridge (Konnemanns Bridge) was constructed over Prospect Creek at Vine Street to replace an old one that was below the 100 year flood level. The old bridge flooded frequently, causing upstream flood levels to rise.

The construction of the new bridge and the associated creek improvement works have lowered the flood level in the area by more than one metre. The widening of the waterway area also gave Council the opportunity to reassess an earlier proposal for extensive use of gabion baskets to stabilise the creek banks to a more ecologically sensitive approach.

The project is an example of Eco-engineering. It combines both hard and soft elements that reduce flood levels, stabilise and prevent bank erosion, and provide a number of environmental outcomes that otherwise would not happen with a traditional hard engineering approach.

The riffles (small rapids) streamline the flows into the centre of the waterway area (to protect the toe of the bank from erosion) and control the water surface level in the creek. They provide habitat for aquatic organisms, while adding interest and variation to the stream flows.

Before



After

Established



Riffles

