

FAIRFIELD CITY 2040 A LAND USE VISION

Shaping A Diverse City

Draft Local Strategic Planning Statement



CONTENTS



About this Plan	6
Policy Context	6
Community Engagement	7
Strategic Context	11
Place in the region	12
Local profile	14
Fairfield City Areas	15
Vision Statement 2040	22
Themes & Planning Priorities	23
Theme 1:	
Community well-being	
– healthy & liveable places	26
Planning Priority 1 – Provide housing that accommodates the needs of existing and future residents	28
Planning Priority 2 – Deliver greater housing diversity and affordability to meet the changing needs of the community	30
Planning Priority 3 – Plan for and manage areas identified for future urban development ...	31
Planning Priority 4 – Provide attractive, healthy and safe places for the whole community	32
Planning Priority 5 – Protect the city's heritage	34
Theme 2:	
Infrastructure & places	
– supporting growth & change	35
Planning Priority 6 – Ensure infrastructure is aligned to accommodate planned growth and community needs	37
Planning Priority 7 – Leverage opportunities from major new district infrastructure and services and technological developments	39
Theme 3:	
Environmental sustainability	41
Planning Priority 8 – Protect areas of high natural value and environmental significance and improve the health of catchments & waterways	44
Planning Priority 9 – Realise the Parkland City Vision	46
Planning Priority 10 – Adapt to natural hazards and environmental impacts	47
Theme 4:	
Strong & resilient economy	48
Planning Priority 11 – Promote a robust economy which generates diverse services and job opportunities	50
Planning Priority 12 – Plan for and manage urban services land	51
Theme 5:	
Good governance	
– advocacy & consultation	52
Planning Priority 13 – Ensure a well-engaged and informed community	54
Planning Priority 14 – Monitor and report on the delivery of the LSPS actions	55
Planning Priority 15 – Review the LSPS to adapt to changing priorities and circumstances	56
Planning Priority 16 – Advocate for and represent the Fairfield City community	57
Implementation, monitoring & reporting	58
LSPS Action Plan	60



ABBREVIATIONS

CSP	Community Strategic Plan
DCP	Development Control Plan
DPIE	Department of Planning, Industry and Environment
EP&A Act	Environmental Planning and Assessment Act 1979
GSC	Greater Sydney Commission
IP&R	Integrated Planning and Reporting
LHC	Land and Housing Corporation
LALC	Local Aboriginal Land Council
LEP	Local Environmental Plan
LGA	Local Government Area
LG Act	Local Government Act 1993
LSPS	Local Strategic Planning Statement
OEH	Office of Environment and Heritage
RMS	Roads and Maritime Services
TfNSW	Transport for NSW

FIGURES & TABLES

Figure 1:	LSPS relationship with State Government and Fairfield City Plans
Figure 2:	Corporate and strategic land use planning framework
Figure 3:	Fairfield City regional context map
Figure 4:	Fairfield City local profile
Figure 5:	Fairfield City areas
Figure 6:	Eastern area thematic map
Figure 7:	Central area thematic map
Figure 8:	Western area thematic map
Figure 9:	Fairfield urban area waterways
Table 1:	LSPS Themes and Planning Priorities

NOTES:

In March 2018, amendments to the Environmental Planning and Assessment Act 1979 (EP&A Act) introduced new requirements for all councils to prepare and make local strategic planning statements (LSPS) which set out:

- the 20-year vision for land use in the local area
- the special characteristics which contribute to local identity
- shared community values to be maintained and enhanced
- how growth and change will be managed into the future

The LSPS demonstrates the 20 year vision and how the 20 year vision gives effect to A Metropolis of Three Cities – The Greater Sydney Region and the Western City District Plan, based on local characteristics and opportunities, and Fairfield City Council's own priorities in the Fairfield City Plan (community strategic plan) prepared under the Local Government Act 1993.

Once implemented, the Fairfield City LSPS will be the key resource to understand how strategic and statutory plans including the local environmental plan, development control plans and development contribution plans will be implemented at the local level.

The recent changes to the EP&A Act require councils in the Greater Sydney Region to obtain the Greater Sydney Commission's (GSC) written support that a LSPS is consistent with the applicable regional and district and strategic plans before they can formally make their LSPS.



Fairfield City Council acknowledges the traditional custodians of the land in which the Fairfield Local Government Area is situated - the Cabrogal of the Darug Nation.

ABOUT THIS PLAN



The Local Strategic Planning Statement (LSPS) provides the strategy for the Fairfield community's economic, social and environmental land use needs over the next 20 years.

It sets clear planning priorities about what will be needed, such as jobs, homes, services and parks, where these should be best located and when they will be delivered.

The LSPS sets short, medium and long-term actions to deliver the priorities for the community's future.

This LSPS has been prepared in accordance with clause 3.9 of the Environmental Planning and Assessment Act 1979 (the EP&A Act).

The LSPS brings together and builds on planning work found in Council's other plans, studies and strategies such as the Local Environmental Plan (LEP), Development Control Plans (DCP) and Development Contributions Plan. The LSPS will be used to update these plans.

Three Cities (Greater Sydney Region Plan), 2018. The LSPS outlines how these plans will result in changes at the local level, principally through new infrastructure including new or improved transport connections.

The LSPS works with the Fairfield City Plan 2016-2026 (Council's Community Strategic Plan), which has a focus beyond land use and transport, on how Council will work to meet the community's needs. The LSPS's planning priorities and actions provide the rationale for how land use decisions will be made to achieve the community's broader goals. The LSPS aligns to the Community Strategic Plan priorities, which is reflected in the LSPS deliverables.

The LSPS consists of descriptions, maps and diagrams and charts which provide context and direction for land use decision making in Fairfield City.

The purpose of the LSPS is to:

- Provide a 20-year land use vision for Fairfield City
- Outline the characteristics which make Fairfield City unique
- Identify shared community values to be enhanced or maintained
- Direct how future growth and change will be managed
- Inform changes to planning rules in the LEP and DCP
- Implement the relevant Directions and Planning Priorities in the Western City District Plan (2018)
- Identify where further detailed strategic planning is needed.

POLICY CONTEXT

The LSPS gives effect to the Western City District Plan 2018, implementing the Directions, Planning Priorities and Actions at a local level. It is also informed by other State-wide and regional policies including A Metropolis of



The Crescent Plaza, Fairfield City Centre

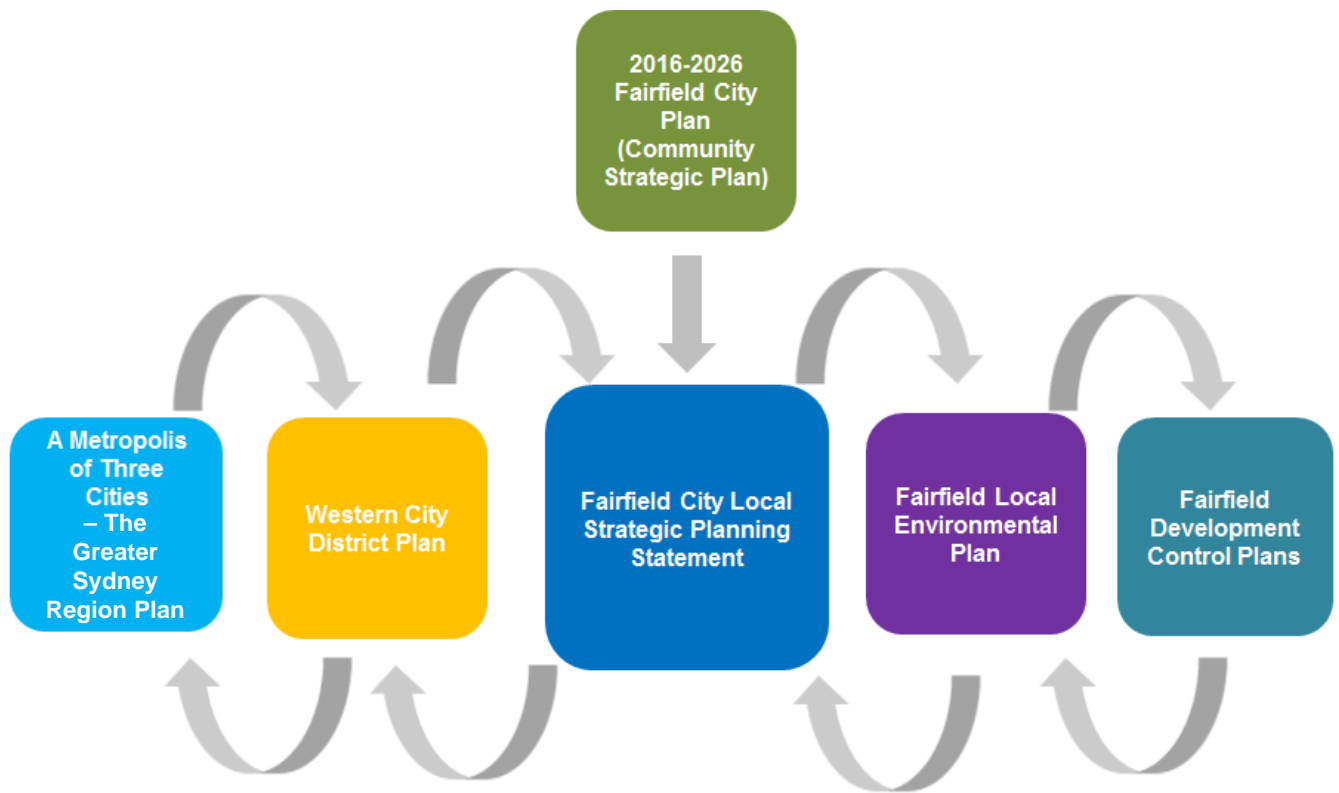


Figure 1: LSPS relationship with State Government and Fairfield City Plans

COMMUNITY ENGAGEMENT

FAIRFIELD CITY PLAN

Community engagement is an essential part of how Council plans for the future of Fairfield City. The engagement activities undertaken as part of the community engagement strategy are designed to harness the success of existing networks and previous engagements. This will provide the foundations to build upon and support the development of the Fairfield City Plan and any future plans.

In 2016, Council undertook a comprehensive engagement to inform the 2016-2026 Fairfield City Plan. Council delivered multiple engagement activities as part of the 2016 Community Engagement Strategy. This was necessary to increase the likelihood of gaining a more representative response from the community. Council used the IAP2 Public Participation Spectrum and the Fairfield City Council's Principles of Engagement, which are based on the social justice principles of access, equity, participation and rights.

Engagement with the community included online and paper-based surveys, one-on-one phone surveys, group sessions, advisory committees' discussions, interagency networks, workshops, and submissions via email or post.

The stakeholders' Council focused on included residents, visitors, local businesses and industries, community organisations and groups, education providers, students and government agencies. More than 1,271 community members took the opportunity to have a say on what they feel is important to the community and where they believe Fairfield City should be focussing its resources.

The survey was designed to meet the Integrated Planning and Reporting objectives for the Fairfield City Plan revision, which is to enhance and maintain the community's shared vision by identifying their needs and aspirations across the quadruple bottom line (social, environmental, economic and governance). This is also consistent with the same objectives and requirements for the Fairfield City Local Strategic Planning Statement.



This was achieved by addressing three key components for the community:

- Where are we now?
- Where do we want to be in 10 years' time?
- How will we get there?

Community engagement is an important process to identify the community's vision, priorities, goals, outcomes and strategies. Information about the community's needs and aspirations was collected, analysed and grouped into similar priorities. As a result the following was identified as part of the 2016-2026 Fairfield City Plan:

The top ten (10) priorities for Fairfield City identified by the community are:

1. Local traffic flow and road safety
2. Community safety
3. Inviting and well used community places and parks
4. Attractive and lively town centres
5. Connected transport systems
6. Job opportunities
7. Cleaner streets
8. Affordable housing
9. Car parking spaces
10. Access to schools, universities, colleges and TAFE

COMMUNITY VISION

FAIRFIELD CITY PLAN

"We are Fairfield City – a welcoming, safe and diverse community where we are proud to belong, invest and prosper."

The Fairfield City Plan identifies five themes to achieve the community's vision.

Community Wellbeing
Places and Infrastructure
Environmental Sustainability
Local Economy and Employment
Good Governance and Leadership



The Crescent Plaza, Fairfield City Centre



ALIGNMENT TO FAIRFIELD CITY LSPS

The development of the 2016-2026 Fairfield City Plan has been built on years of community engagement activities. As a result, Council has a wealth of information, which continues to inform the future direction of the City. This provided the foundations to build upon and support the development of future plans including the Fairfield City LSPS (this plan).

Based on Council's Integrated Planning and Reporting Framework (IP&R), the Fairfield City Plan set high level objectives including the community's vision, priorities, goals and strategies that also relate to land use planning.

The LSPS will act to unify the land use planning aspirations of the community with broader State planning directions. It will do this by drawing together and summarising the planning priorities identified through state, regional, district and local strategic plans including the Fairfield City Plan.

It provides the local context and local-scale expression of actions and priorities from these plans.

Due to the surveys undertaken as part of the community engagement strategy in 2016, Council still retains the extensive and informative data, which has been used to inform the LSPS.

Therefore the community's vision, priorities and goals identified in the 2016-2026 Fairfield City Plan are suitable to guide the Fairfield City Local Strategic Planning Statement's vision, themes and priorities. This will ensure that the LSPS has been incorporated in Council's Integrated Planning and Reporting Framework to maintain an effective and holistic approach to the future of Fairfield City.

The figure below illustrates Fairfield City LSPS integration into the existing planning and reporting framework.

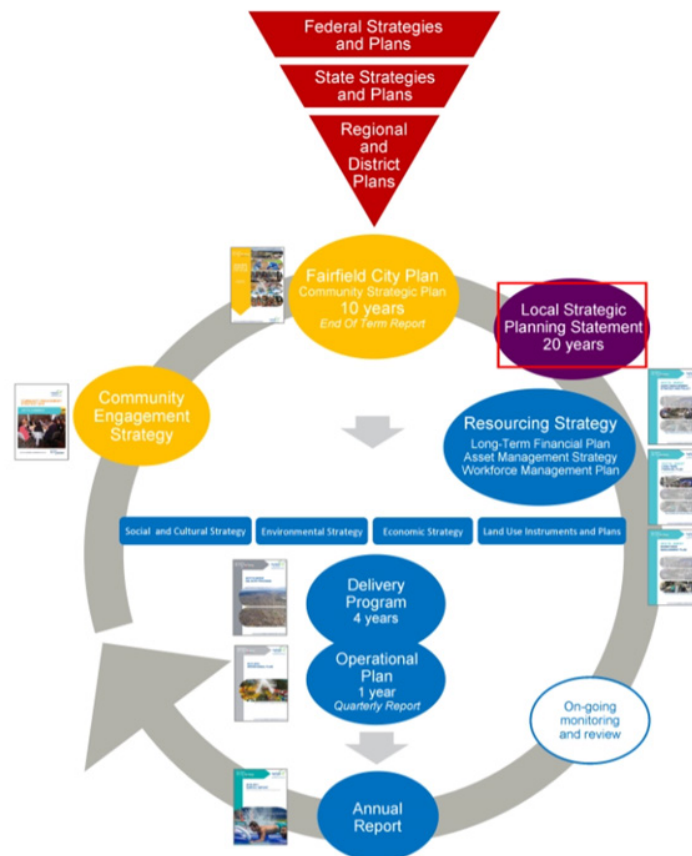


Figure 2: Corporate and Strategic land use planning framework



Since the 2016 consultation program outlined above, the following community engagement, relevant to the contents of this LSPS, for land use related matters has been undertaken.

RURAL LANDS UIA

In 2018/19 extensive community consultation was undertaken for the preparation of the Rural Lands Urban Investigation Area (UIA) draft Structure Plans. This included a public meeting (attended by 600 plus people) and 230 individual drop-in sessions with landowners and residents during the public exhibition period. At the end of the public exhibition period Council received 271 submissions from individual property owners in the rural area as well as two petitions containing a total of 708 signatures.

ESTABLISHED URBAN AREA

Council has undertaken proactive strategic planning in recent times for its town centres. Part of the process has been engaging with property owners and the community to develop a planning framework for town centres of the future.

Outcomes have been the identification of potential community benefits including open spaces, community facilities, pedestrian connections and civic plazas. Urban design studies for Fairfield, Fairfield Heights and the Villawood centres were adopted by Council in March 2018.

Six further centres are subject to current work and engagement including parts of Fairfield, Cabramatta, Canley Vale, Carramar, Yennora and Smithfield.

GOVERNMENT AGENCY CONSULTATION

In the preparation of the LSPS and other initiatives (e.g. community health), Fairfield City has and will continue to work collaboratively with a range of State agencies including the following:

- GSC – affordable housing, UIA, Green and Blue Grid, employment lands
- Department Planning and Industry – LSPS and strategic planning strategies (biodiversity, open space)
- Department of Education – shared use of facilities and open space opportunities
- Land & Housing Corporation – redevelopment opportunities (including housing stock in Villawood and Bonnyrigg)
- TfNSW & RMS – local/regional traffic planning and public transport services
- Aboriginal Land Council – Aboriginal Heritage Study and potential impact by future development
- Western Sydney Parklands – initiatives associated with the WS Parklands and associated Plan of Management.

STRATEGIC CONTEXT



The following figure shows the position of Fairfield City within part of the Western City District, the existing four main town centres of City, main transport corridors, adjoining local government areas and centres within the Western City and Central River City, including the Western Sydney Airport and Aerotropolis.

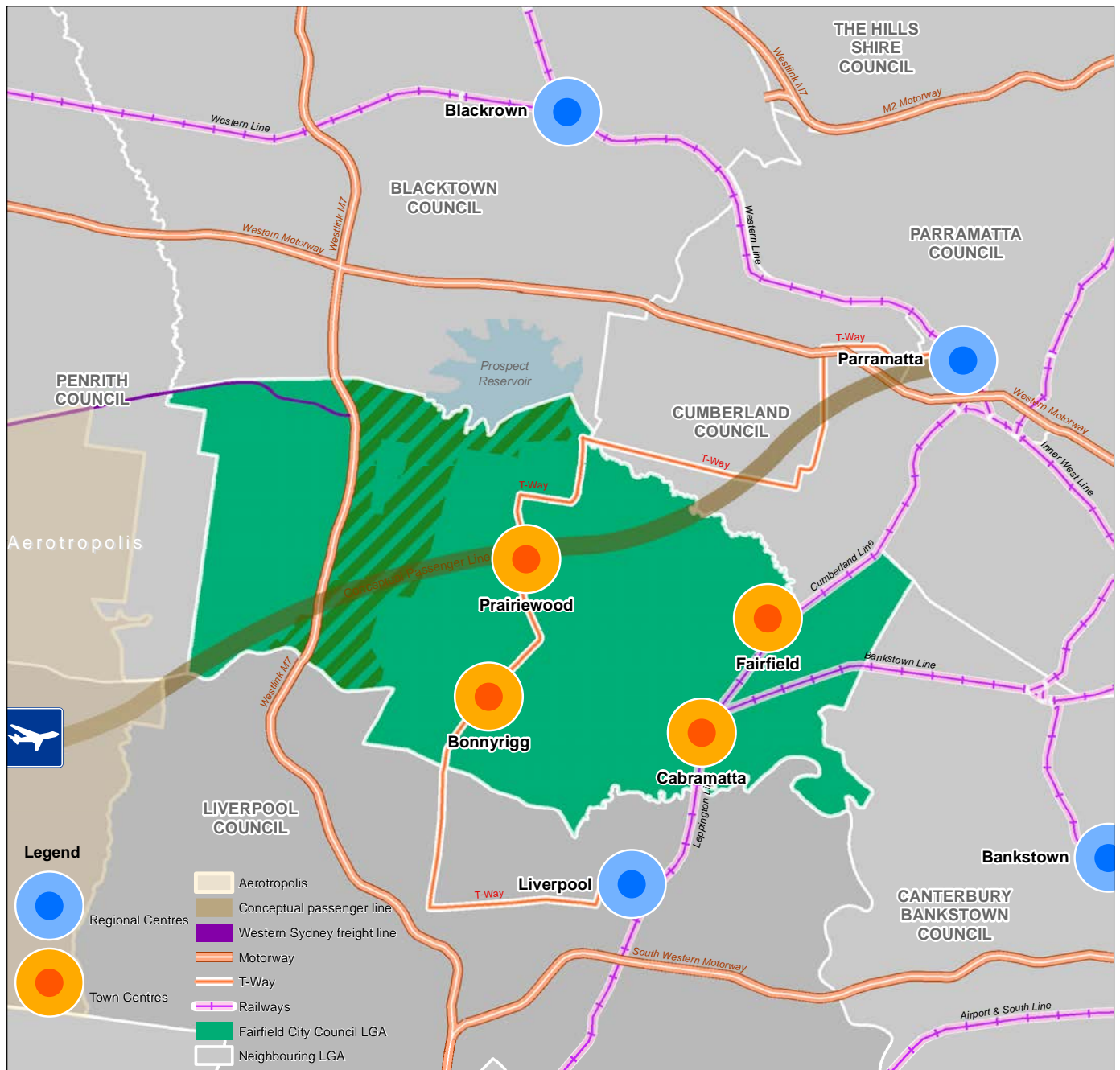


Figure 3: Fairfield City regional context map

A major transformational element shown in the above figure is the alignment of the potential passenger rail corridor (appearing in the NSW Future Transport 2056 Strategy). This corridor represents a major opportunity for addressing the deficiency in east-west public transport connections in Fairfield City. This will help implement an important cornerstone of the Greater Sydney Region Plan of the 30 minute city.

PLACE IN THE REGION



Fairfield is a welcoming place. Located in the east of the Western City District, the City generally comprises three distinct areas: eastern, central and west. These are shown in Figure 3 and are the result of the historic settlement pattern and geography. A detailed description of these three areas is provided below.

Fairfield has an estimated population of 208,500 people. Since the end of the Second World War, the community has played a significant role in welcoming new migrants and refugees to Australia with over 100,000 residents, or over 50% of the total population, born overseas and settled in Fairfield since 1960. Of the 69,500 residents who arrived since 1991, 93% were refugees or families of refugees. Fairfield City settled more than 9,000 refugees, or 50% of refugees settling in NSW, in the three years to 2018.

In the suburb of Fairfield, 1 in 5 people arrived within the last 5 years due to the strength of existing social, cultural and familial networks.

Fairfield is a place of green corridors. The Fairfield local government area covers 102 km² of land in the Cumberland Plain, containing the Hawkesbury-Nepean and the Georges River systems. It is home to ecologically endangered Cumberland Plain Woodland, with the Western Sydney Regional Parkland and green grid along the City's creek lines providing a link to surviving native vegetation within both urban and rural landscapes and the opportunity to discover the City using a well-established citywide cycleway network.

Fairfield is a place of residential renewal and growth. In recent years, the City's population has grown slowly providing opportunities for people seeking to settle in a more affordable area conveniently located between the Western Sydney regional centres of Parramatta and Liverpool. These centres have good accessibility via rail and a dedicated busway. Out of 10 households, 7 live in detached housing, 2 in townhouses and 1 in an apartment. New housing will be provided with greater housing diversity in areas close to services, facilities and public transport.

Fairfield reflects diversity in its centres. The heart of the City is the Fairfield City Centre, a cosmopolitan destination which acts as a magnet for new residents creating new lives and embracing lifestyle and employment opportunities. Cabramatta is a regional "Taste of Asia" tourist drawcard for Vietnamese and South-East Asian food, restaurants and commerce. Bonnyrigg has emerged as a place of cultural unity and diversity that reflects 'all the world in one place' within a green environment. Prairiewood provides a high value regional shopping and recreational experience.

Fairfield represents the changing nature of employment. In the post war years, manufacturing in the east of the City and agricultural uses in the west provided employment and prosperity. Despite the impacts of globalisation, manufacturing concentrated in the Smithfield/Wetherill Park industrial area will still be a key priority as it changes due to innovation and new technology. The City's location allows a diverse range of industries including emerging industries, logistics and trade, administrative, professional, health and education centres in the region, with rail providing access to jobs within the Sydney CBD.

Fairfield is a compassionate community of opportunity and challenge. Many residents who have settled in the City have a history of entrepreneurship, with success in local and national businesses proudly emerging from Fairfield City. There remains, however, the challenge of addressing high social disadvantage, low incomes, poor health outcomes, the highest rates of gambling losses nationally and higher than average unemployment. Notwithstanding, the City is a centre of excellence in settlement for refugees. This is achieved through broad community support and non-government organisations who strive to provide support and assistance to new residents to achieve their potential.

Fairfield is guided by an exciting vision and robust planning. Council has been planning for its community, centres and local economy by applying a place based approach for over 20 years. The City's local environmental plan which became effective in 2013 was



underpinned by a range of studies and strategies. A new local environmental plan is being prepared and will be informed by the Planning Priorities and Actions in this LSPS. An Accelerated LEP Review Program is being funded by the State Government with the document to be finalised by mid-2020. Funding is being derived from the Western Sydney City Deal which is a whole of government approach that aims to drive the creation of the Western Parkland City over the next 20 years.

Good governance requires timely reviews to adjust to changing circumstances. The new Western Sydney Airport, due to open in 2026, has led to an investigation of the future of the City's rural area (the 1,600 hectare Horsley Park – Mount Vernon Urban Investigation Area (UIA)).

Fairfield City is an important gateway to the world. Every nationality, culture, religion and language is sure to be found here, with extraordinary stories and possibilities able to be shared and celebrated. Over the next 20 years, Council will facilitate urban renewal and potential growth by planning for a diversity of homes, access to jobs and services, and a green environment for an estimated population of 245,145 across the City by 2036. This is an increase of 39,470 people from the population count at the 2016 Census. The LSPS demonstrates how these needs will be met.





Local Profile

The following figure shows key features of the demographic profile of Fairfield City at the 2016 Census¹ and how this is forecast to change by 2036². This forecast change is one of the key factors which influences the themes, planning priorities and actions of this LSPS.



Fairfield City Population

210,612 people (2018)
245,145 people forecast (2036)³



People aged 65+

27,640 people (2016)
43,913 people forecast (2036)



Total households

62,369 households (2016)
76,629 households (2036)



Couples without dependents

11,921 households (2016)
16,860 households forecast (2036)



Family households

40,025 households (2016)
46,312 households forecast (2036)



Single households

9,165 households (2016)
12,019 households forecast (2036)



Number of dwellings

63,499 dwellings (2016)
78,797 dwellings (2036)



Dwelling types

71% separate houses (2016)
18% medium density (2016)
9% high density (2016)
2% other (2016)

Figure 4: Fairfield City local profile



Historic Fairfield Railway Station (1856) with modern bus interchange, with Fairfield Park in the background.

¹ Source: idcommunity, community profile, 2019

² Source: idcommunity, population forecast, 2019

³ Source: idcommunity, population forecast, 2019



Fairfield City Areas

The following figure shows the three distinctive areas of the Fairfield local government area. These comprise an eastern, central and western area. The boundaries of these reflect settlement periods and/or other key physical features.

Details of key local strategic contextual elements and associated local priorities and opportunities are detailed further below.

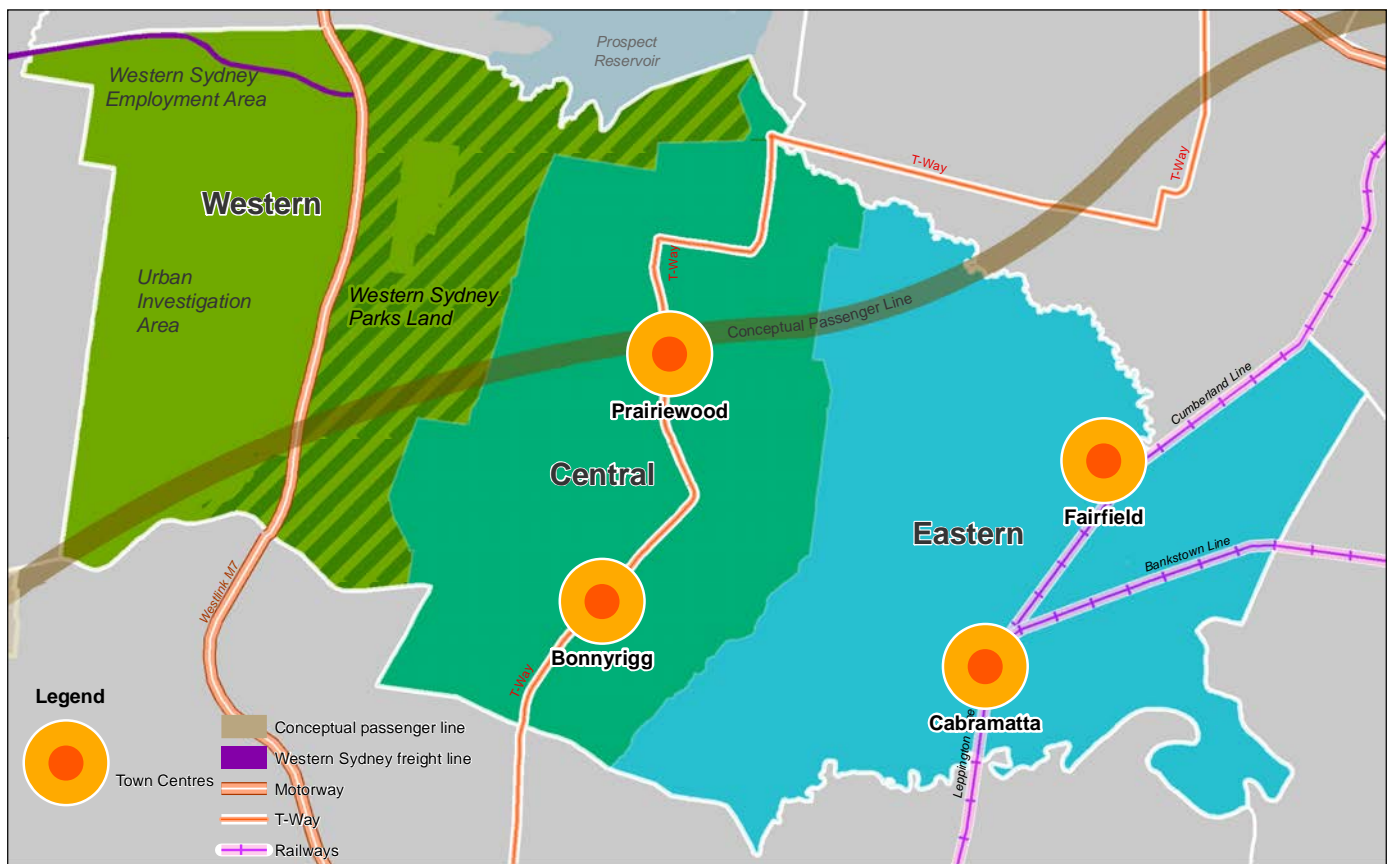


Figure 5: Fairfield City areas



EASTERN AREA

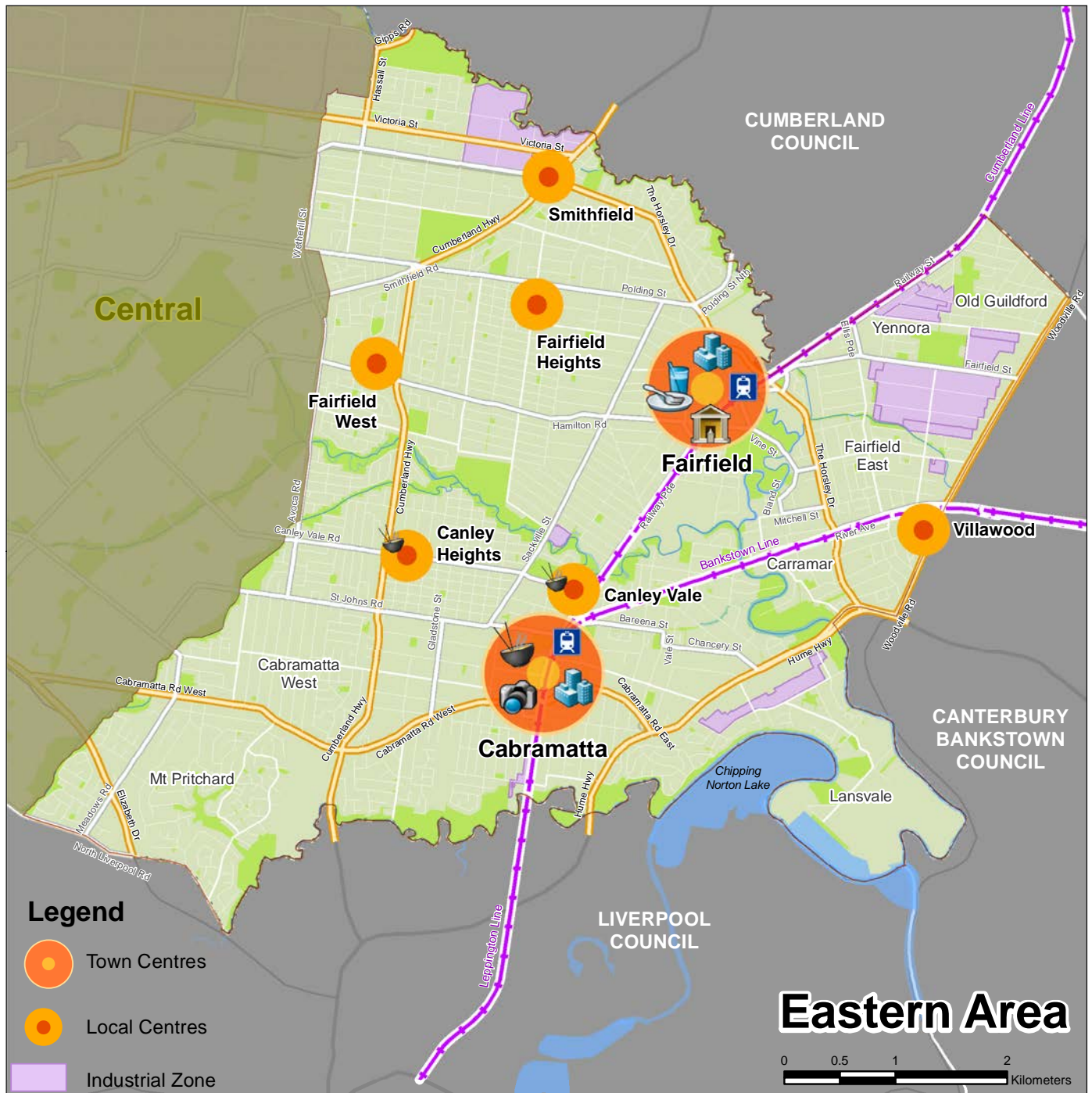


Figure 6: Eastern area thematic map



EASTERN AREA KEY FEATURES

- Oldest urban area of Fairfield City, built around the railway lines (from the mid 1800s) and includes the main town centres of Fairfield and Cabramatta. Other smaller town centres provide local shopping, fresh food, restaurants and services for the surrounding residential neighbourhoods.
- Each of the centres has a unique character reflecting the population diversity, which creates food and cultural destinations.
- The landform is geographically the lowest lying areas of Fairfield City where the main urban creeks (known as the 5 creeks) converge and flow eastwards into the Georges River.
- Major road and rail corridors reduce connectivity within and between centres and public spaces.
- Diverse housing stock ranging from low density dwellings (often incorporating secondary dwellings) to 1960/70 three storey walk up residential flat buildings. There is some high density apartments have recently been completed in some of the town centres including Bonnyrigg and Canley Heights adding a diversity of housing choice in these suburbs.
- The population type is dominated by parents and home builders, defined as people aged 35-49, however, this group is declining in the Eastern City, while older workers (50-59) and retirees (60-69) are increasing.
- The area has been subject to several waves of immigration settlement including resettlement of

approximately 9,000 refugees in the three years to 2018.

- Key public buildings and services include libraries at Cabramatta, Fairfield and Smithfield, the Fairfield and Cabravale leisure centres, Centrelink offices at Cabramatta and Fairfield, Fairfield Local Court House and a number of Council run community centres.
- One major transport interchange is located in Fairfield City Centre providing bus/train east/west connections.

EASTERN AREA LOCAL OPPORTUNITIES

- Use water sensitive urban design and acquire land where necessary to create new parks/detention basins to address increased demand on ageing stormwater system by infill development.
- Need for improved public transport infrastructure and bike/pedestrian links in parts of the area.
- Maximise opportunities associated with new rail infrastructure (WSFL & WSA Passenger line).
- Ensure there is no net loss of open space and new infrastructure does not further reduce connectivity within area.
- Continue to enhance the public domain of the town centres and seek design excellence in private development.
- Provide future housing (including affordable housing) primarily in town centres well serviced by public transport and least environmental constraints.
- Implement the Parkland City Vision through increased tree planting and canopy cover.



Moon Festival, Freedom Plaza, Cabramatta



CENTRAL AREA

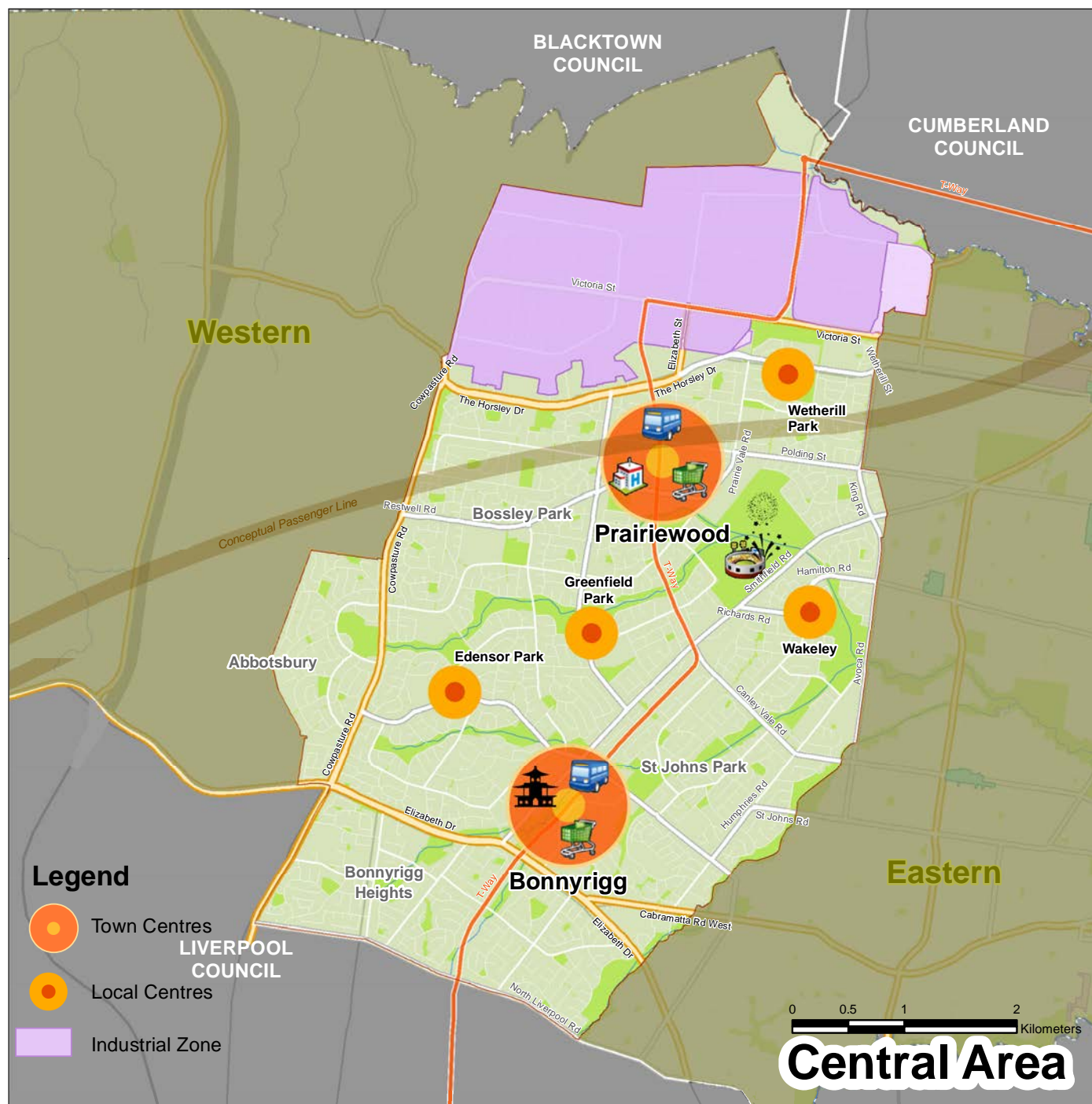


Figure 7: Central area thematic map

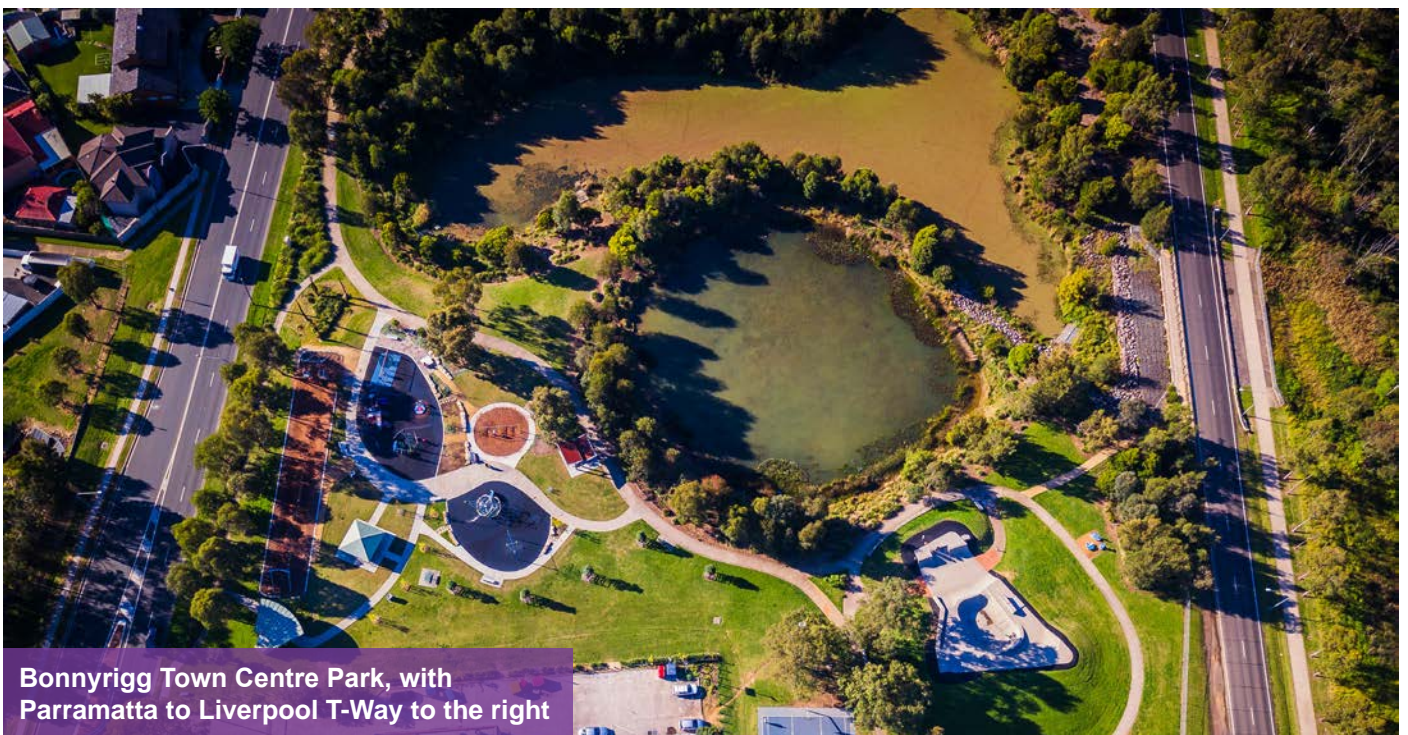


CENTRAL AREA KEY FEATURES

- The main town centres are Prairiewood and Bonnyrigg with several smaller local centres providing day to day services.
- The area is predominantly low density residential built in the 1980 – 2000s.
- The population type is dominated by parents and home builders, defined as people aged 35-49, however this group is declining with a significant increase in retirees (60-69) and seniors (70-84 and 85+). The young work force (25-34) is also on the increase.
- Major public/private housing urban renewal project at Newleaf adjoining the Bonnyrigg town centre. The Prairiewood town centre includes the Fairfield hospital precinct, police station, Aquatopia, high school and Stockland shopping centre.
- Fairfield Showground provides a district level sporting and cultural facility.
- Includes the nationally significant Wetherill Park urban services employment area.
- Has high provision of district and local open space.
- Located at the top of the Georges River Catchment and features numerous creek lines and tributaries.
- Relies on the Liverpool to Parramatta bus T-Way through spine as major public transport corridor.

CENTRAL AREA LOCAL OPPORTUNITIES

- Provision of an east west rail line linking Parramatta and Western Sydney Airport creates opportunities for Prairiewood to evolve as a district centre.
- Connectivity to employment opportunities to the east and west.
- Reduced reliance on private motor vehicles.
- Further expand the Fairfield Showground site and Aquatopia as focal points for community interaction and celebrations.
- Enhance the role and function of Wetherill Park associated with the Western Sydney freight line and potential sidings.
- Improved public transport capacity through the upgrading of the Parramatta to Liverpool Bus T-Way to higher order mass transit.
- Potential for increased canopy cover along existing creek lines and restoration of hard engineered creeklines at time of major renewal works where feasible to support the blue and green grid.





WESTERN AREA

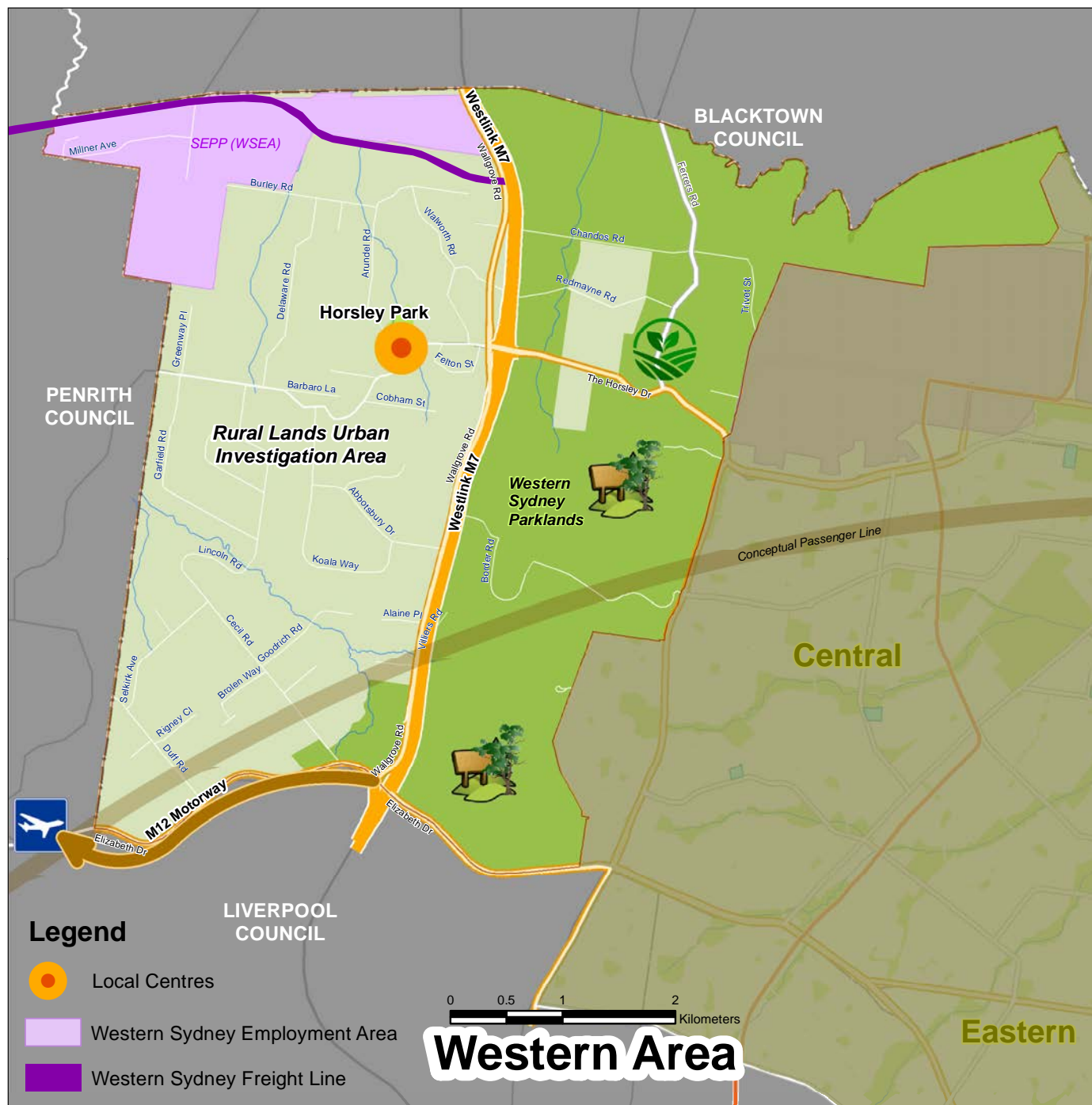


Figure 8: Western area thematic map



WESTERN AREA KEY FEATURES

- Western Sydney Parklands (area in Fairfield 1,450 ha) (includes Prospect Reserve, Calmsley Farm, Plough & Harrow Reserve and Lizard Log) provides major recreational and social facilities for the population of Fairfield and the wider region.
- Functional separation from the central area of Fairfield City by the M7.
- Fairfield rural lands comprising the suburbs of Horsley and Cecil Park with an area of approximately 15 km².
- Comprises a small section of the Western Sydney Employment Area (south of the Western Sydney Pipeline (270 ha).
- Proximity to major motorways, arterial roads and linkages to Port Botany and regional intermodals.
- Provides for rural residential living (including executive/lifestyle housing) and provides for agricultural activities primarily market gardening.
- Undulating landform, scenic landscapes at the top of the Hawkesbury Nepean Catchment which includes Ropes and Reedy Creeks (major tributaries of South Creek).
- Most extensive tree canopy cover of the three areas of Fairfield city.
- Contains the most extensive areas of potential Aboriginal archaeology and landscapes and the

nationally significant Horsley Homestead.

- The Horsley Village local centre providing local services and goods to the rural area. The adjoining Horsley Reserve is a venue for community events and recreation.

WESTERN AREA LOCAL OPPORTUNITIES

- Undertake planning investigations for the Fairfield Rural Lands Urban Investigation Area (UIA).
- Managing opportunities and impacts associated with close proximity to Western Sydney Airport and Aerotropolis.
- Involvement in planning investigations for potential east west rail line linking Parramatta and Western Sydney Airport and Western Sydney freight line
- Identify opportunities associated with the new and upgraded major corridors (including Southern Sydney Link Rd, M12, Elizabeth Dr widening and new local road connections).
- Collaborate with Western Sydney Parkland Trust to maximise the benefits from the parklands for the Fairfield community.
- Preserve and enhance character and environment of the area as change occurs.



Public art, Parramatta to Liverpool
T-Way corridor, Central Area.

VISION STATEMENT 2040



Fairfield 2040 – Shaping a Diverse City

The vision for Fairfield City to 2040 builds upon the existing strengths of the City. The foundation of the successful community's diversity showcased by celebration, inclusion and integration will extend to a transformation of the physical city, providing a greater diversity of housing, employment, education, and lifestyle choices as well enhancing the City's environmental attributes.

Specifically, the City's vision of "Shaping a Diverse City" will be achieved in the following targeted ways:

Theme 1: Community well-being – healthy and liveable places

The City will be structured to take advantage of existing public transport infrastructure with heavy rail to the east and the Liverpool to Parramatta bus transitway to the west. Opportunities for housing diversity will be focused on accessibility to transport, services, facilities and open space. Recreation opportunities will build upon current social infrastructure, with a focus on meeting deficiencies in current high density areas. Access to playgrounds and active sport will encourage healthier lifestyles.

Theme 2: Infrastructure and places – supporting growth and change

The unique offerings within the four main centres of Fairfield, Cabramatta, Prairiewood and Bonnyrigg will continue to attract residents and visitors and help these areas thrive. The South East Asian flavour of Cabramatta is an exemplar of Fairfield City's renowned reputation as a place where the exotic and unique can be found. Council will continue to invest in hard and soft infrastructure, making places easy to get to and exciting to visit due to high quality urban environments and cultural facilities that make it a city of interest.

Theme 3: Environmental sustainability

The City has a proud history of environmental initiatives recognised and showcased globally. Past efforts and

investments in revegetating the city's extensive creek lines corridors and cleaning its waterways has resulted in new green corridors and habitats that promote the vision for the Western Parklands City. These elements provide an excellent backdrop for the city's extensive cycleway network, with recreation facilities and sporting fields all interconnected and accessible. The community acting as partners will continue to transform the City into a clean, healthy and resilient place well beyond 2040.

Theme 4: Strong and resilient economy

Globalisation provides both challenges and opportunities for the enterprising local community. Fairfield City will maximise the advantages of its crossroad location between east and south west Sydney becoming the gateway from Western Sydney Airport leading to Parramatta and beyond to the Sydney CBD. Access to higher education and major health care services in adjoining areas, as well as increased provision of these services in the City, will provide employment opportunities and thereby help to implement the 30 minute city. The ever changing economy will not be a threat to an area that has thrived from change and diversity.

Theme 5: Good governance – advocacy and consultation

As technology develops and changes, and the community adjusts to new ways of engaging and communicating, the Council will be ready to lead the way in supporting community advocacy and engagement. This will ensure planning, prioritising, and decision making that inform investments and the City's structure reflects broad community aspirations and needs. Information is power, and the Council will continue to provide the community with the required information to establish informed decision making based on all available evidence.

THEMES & PLANNING PRIORITIES



THEMES & PLANNING PRIORITIES



Five related themes make up the Vision for Fairfield City:

- Theme 1:** Community well-being – healthy & liveable places
- Theme 2:** Infrastructure and places – supporting growth & change
- Theme 3:** Environmental sustainability
- Theme 4:** Strong & resilient economy
- Theme 5:** Good Governance – advocacy & consultation

These five themes will be implemented through the 16 planning priorities, each having a number of specific actions associated with it. These actions are the specific measures that will be undertaken to guide and inform land use decisions to 2040.

The Action Plan identifies the timeframe (short, medium and long term), responsibility and monitoring measure for each action.



The Action Plan also identifies how these actions will be integrated into Fairfield City Council's Integrated Planning and Reporting such as the Delivery Program and Operational Plan for implementation.

Council has structured its activities in the Delivery Program and Operational Plan into project and services including major programs. Projects are defined as value adds/enhancements to a service, while service delivery is the regular function Council provides to the community.

Major programs are part of Council's service delivery. Due to the significant body of work, detailed information is provided on activities and costs to identify the resourcing requirements for delivery of major programs.

Examples of major programs are road and transport renewal/upgrades. The actions identified in the following Table 1 will be categorised under the three options: projects, service delivery and major programs. The implementation of each will be monitored, with and progress reported through Council's Quarterly, Annual and End of Term Reports.



Prairiewood Leisure Centre, expanded recently with the opening of Aquatopia water park.



**THEME 1
COMMUNITY WELL-BEING
– HEALTHY & LIVEABLE
PLACES**

Planning Priority 1

Provide housing that accommodates the needs of existing and future residents.

Planning Priority 2

Deliver greater housing diversity and affordability to meet the changing needs of the community.

Planning Priority 3

Plan for and manage areas identified for future urban development.

Planning Priority 4

Provide attractive, healthy and safe places for the whole community.

Planning Priority 5

Protect the city's heritage.

**THEME 2
INFRASTRUCTURE & PLACES
–SUPPORTING GROWTH &
CHANGE**

Planning Priority 6

Ensure infrastructure is aligned to accommodate planned growth and community needs

Planning Priority 7

Leverage opportunities from major new district infrastructure and services and technological developments.

**THEME 3
ENVIRONMENTAL
SUSTAINABILITY**

Planning Priority 8

Protect areas of high natural value and environmental significance and improve the health of catchments & waterways.

Planning Priority 9

Realise the Parkland City Vision.

Planning Priority 10

Adapt to natural hazards and environmental impacts.

**THEME 4
STRONG & RESILIENT
ECONOMY**

Planning Priority 11

Promote a robust economy which generates diverse services and job opportunities.

Planning Priority 12

Plan for and manage urban services land.

**THEME 5
GOOD GOVERNANCE –
ADVOCACY & CONSULTATION**

Planning Priority 13

Ensure a well-engaged and informed community.

Planning Priority 14

Monitor and report on the delivery of the LSPS actions.

Planning Priority 15

Review the LSPS to adapt to changing priorities and circumstances.

Planning Priority 16

Advocate for and represent the Fairfield City community.

Table 1: LSPS Themes and Planning Priorities

COMMUNITY WELL-BEING – HEALTHY & LIVEABLE PLACES



COMMUNITY WELL-BEING – HEALTHY & LIVEABLE PLACES



Fairfield City's population is expected to grow from 205,675 to 218,610 between 2016 and 2020 and will accommodate a share of the 464,000 additional people expected in Western Sydney by 2040.

It is forecast that the highest rate of growth will be in older people (over age 65) and young people (18–24). Over 38 per cent of families will have children in 2040.

By providing greater housing choice for our community, we can meet the housing needs of increasingly diverse residents and families (such as young families, new arrivals and retirees) throughout their life. Housing diversity also encourages active lifestyles, increases the number of people living and working close to jobs, services and amenities as well as managing greenfield growth pressures. Due to the socio-economic and cultural distinctiveness of the Fairfield area there will be a need for specific measures to address affordable housing at the local level.

Fairfield City Council is undertaking a Local Housing Strategy that will outline where future growth will occur and in what form. The main centres of Fairfield and Cabramatta East as well as other areas close to rail stations will be the focus of future growth, given the availability of services and infrastructure in these locations. Housing types in these areas will be predominantly apartment buildings ranging from 3-4 storeys on the periphery of centres with higher scale buildings within town centres. New major infrastructure such as the potential Parramatta to Western Sydney

Airport rail link may create opportunities for existing local centres such as Prairiewood to develop into higher order centres with higher population densities.

Out of centre lower density residential neighbourhoods where there are limited constraints will be able to accommodate modest levels of infill development in the form of duplexes and medium density townhouses/villas. Likewise, unsympathetic secondary dwelling (granny flat) developments will need to be restricted or better regulated in these areas given the lack of ability to plan for services for their occupants.

Future residential infill development is restricted in parts of the established areas due to constraints including flooding, traffic and transport considerations. Greenfield growth opportunities for the City are restricted to the Horsley Park – Mount Vernon Urban Investigation Area which is presently being studied to determine its urban capability.

While providing a sufficient supply and diversity of housing is critical, Fairfield City Council is committed to preserving and enhancing the distinctive character of our City. This will be achieved by protecting heritage fabric, requiring better quality private developments and improving the public domain. A place based walking and cycling approach will be taken in planning for our centres and neighbourhoods to better connect them and promote healthier lifestyles. Access to essential services, (including health and education), as well as useable open space are essential for the creation of liveable places.

Planning Priority 1:

Provide housing that accommodates the needs of existing and future residents.

Planning Priority 2:

Deliver greater housing diversity and affordability to meet the changing needs of the community.

Planning Priority 3:

Plan for and manage areas identified for future urban development.

Planning Priority 4:

Provide attractive, healthy and safe places for the whole community.

Planning Priority 5:

Protect the city's heritage.



Planning Priority 1

PROVIDE HOUSING THAT ACCOMMODATES THE NEEDS OF EXISTING AND FUTURE RESIDENTS.

The Fairfield City population in 2016 was 205,675 people, being an increase of 9,196 since 2011. There has been a strong trend towards a rapidly ageing population over the past 20 years. Between 1996 and 2016 the largest growth was recorded for older workers and pre-retirees (aged 50 to 59), empty nesters and retirees, seniors (aged 70 to 84) and the elderly aged (85 and over). Out of 10 households, 6 comprise couples with children, and 3 are couples without children and lone households.

By 2036 the population for Fairfield City is forecast to increase by 38,709 persons (18.75% growth) with the greatest population growth in the suburbs closest to centres, services, facilities and heavy rail: Fairfield, Cabramatta and Villawood. To the west of the City, growth is anticipated in Bonnyrigg due to the redevelopment of the public housing estate and the emergence of the town centre as a higher density residential environment.

At the 2016 census there were 62,733 dwellings in Fairfield City. 71% of these were low density or separate houses. The major contributor to the City's housing stock over the past 5 years has been in the form of secondary dwellings with approximately 3,500 built between 2008 and 2018. These are permitted under State government planning rules for affordable housing. Secondary dwellings are not monitored by the State government and data on occupancy rates is unavailable from the Census. This presents significant problems in planning for infrastructure and services that will need to be addressed, in conjunction with the State government, as part of Council's future planning.

Fairfield's 0-5 year housing supply target for 2016 to 2021 is 3,050 dwellings under the Western District Plan. The 6–10 year housing targets will be developed iteratively through Council's Local Housing Strategy. Meeting housing demand over 20 years requires a longer term outlook. Short, medium and long targets will be informed by land that is available with potential for upzoning for residential development in established areas close to facilities, services and public transport.

By 2026, dwellings are projected to increase to 78,797 which is an increase of 15,298 dwellings. Council has initiated planning proposals to upzone a number of residential precincts in proximity to town centres and public transport. Higher density housing zone is proposed around the Bonnyrigg Town Centre with access to extensive open space. Fairfield Heights and Villawood Town Centres are proposed to increase building heights to permit more shop top housing.

This Planning Priority responds to the following planning priorities of the Western City District Plan:

W5 Providing housing supply, choice and affordability with access to jobs, services and public transport

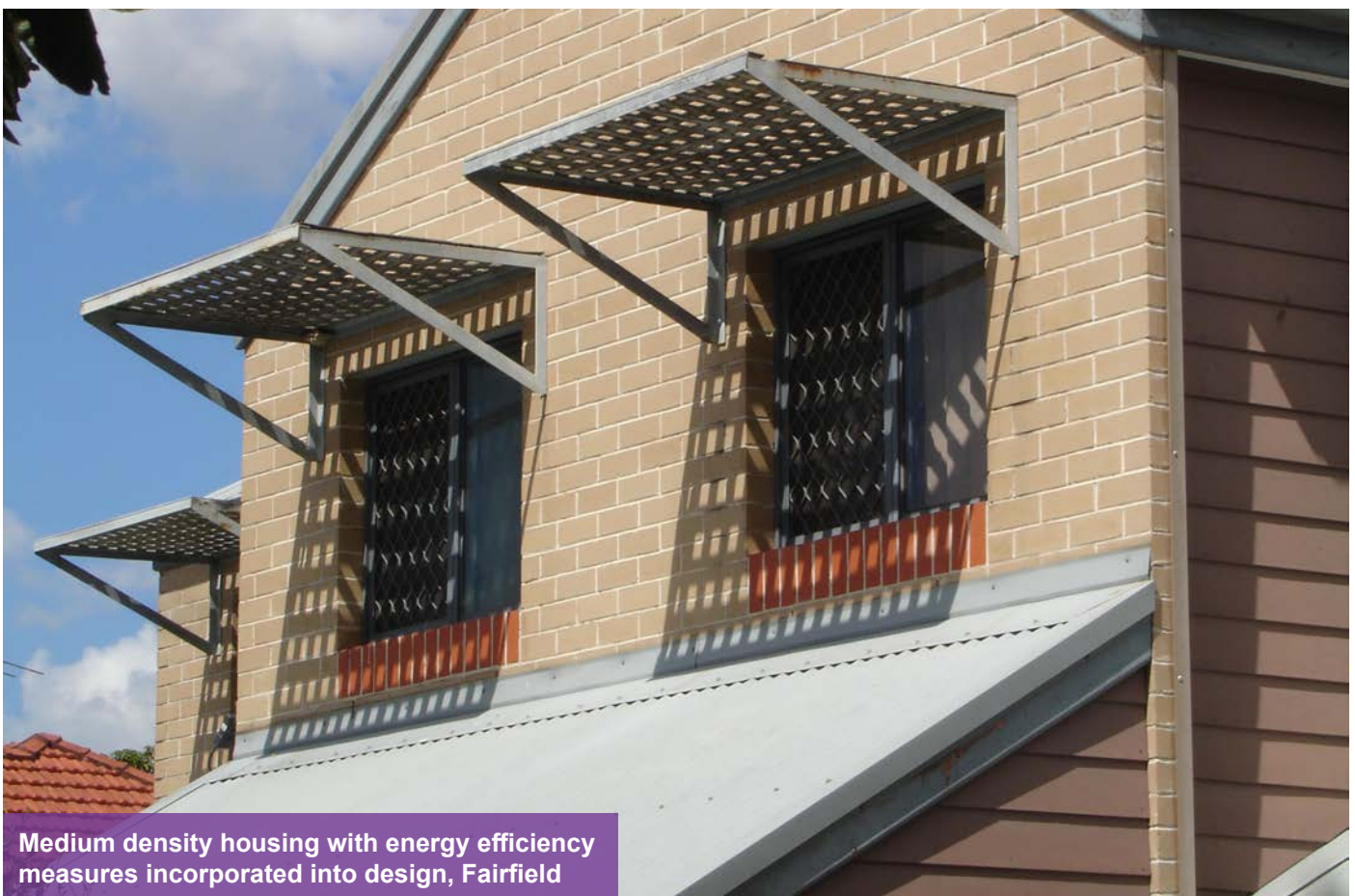
This Planning Priority also responds to the goals of the 2016-2026 Fairfield City Plan:

Theme 2 – Goal A – An accessible and liveable city



Planning Priority 1 – Actions

- 1.1** Council is preparing a Local Housing Strategy in accordance with the Western City District Plan (Planning Priority W5) which will provide housing supply with access to jobs, services and public transport to meet existing and future demand of the community and having regard to cross boundary housing markets.
- 1.2** Council is investigating the following issues as part of the Local Housing Strategy: secondary dwellings, occupancy rates, demand for car parking, current and potential dwelling supply, impacts on services, site coverage and effects on overland flow and environment.
- 1.3** Council will review its LEP and update planning controls to implement the recommendations and directions made in the Local Housing Strategy and reflected in this statement.
- 1.4** Council is working with the GSC to deliver Council's medium and long term housing strategy targets in coordination with the councils within the Western City District, taking into account infrastructure timing and capacity.
- 1.5** Council will monitor, review and update the Local Housing Strategy to ensure it remains relevant.





Planning Priority 2

DELIVER GREATER HOUSING DIVERSITY AND AFFORDABILITY TO MEET THE CHANGING NEEDS OF THE COMMUNITY.

Out of 10 dwellings in Fairfield City, 7 are detached houses, 2 are medium density and 1 is an apartment. As the City grows and renews, a higher proportion of children and families, and culturally diverse residents will be living in apartments with a mix of incomes and housing tenures. Well planned density can be highly beneficial, especially for families living close to public transport and work, as well as shops and amenities such as health and child care.

Within Fairfield, much of the higher density housing stock is occupied by families, especially those on lower incomes. Apartments are often assumed to be the homes of single households or young couples and ‘empty nesters’ and are not often associated as the homes of children. Five in ten households who rent in Fairfield City are doing so within the private rental market. Of those five households, four are experiencing rental stress.

Secondary dwellings, commonly known as granny flats, have accounted for significant growth over a ten year period. Between 2008 and 2018, 3,500 secondary dwellings were approved throughout the City. The 60m²

dwellings are relatively easy to site on existing single dwelling lots and are appealing to owners as they have a high rental return. There are issues around the suitability of this type of accommodation which is often being used by families due to difficulty in accessing the rental market or social housing. The amenity and proximity to services, facilities, public transport and open space for this type of accommodation varies markedly throughout the City.

This Planning Priority responds to the following planning priorities of the Western City District Plan:

W5 Providing housing supply, choice and affordability with access to jobs, services and public transport

This Planning Priority responds to the goals of the 2016-2026 Fairfield City Plan:

Theme 2 – Goal A – An accessible and liveable city

Planning Priority 2 – Actions

- | | |
|------------|---|
| 2.1 | Council will prepare a Local Housing Strategy in accordance with the Western City District Plan (Planning Priority W5) which will address housing choice and affordability. |
| 2.2 | Council will consider, as part of the Local Housing Strategy, the range of housing needs of the community. |
| 2.3 | Council will develop an Affordable Housing Strategy which will identify affordable housing needs and targets and investigate a range of affordable housing types including secondary dwellings, boarding housings, multi dwelling housing and residential apartments and in line with the Western City District Plan. |
| 2.4 | Council will review its LEP and update planning controls to implement the recommendations and directions made in the Affordable Housing Strategy and reflected in this statement. |
| 2.5 | Council will foster affordable housing initiatives, policies and programs identified in the Affordable Housing Strategy. |
| 2.6 | Council will monitor, review and update the Local Housing Strategy to ensure it remains relevant. |



Planning Priority 3

PLAN FOR AND MANAGE AREAS IDENTIFIED FOR FUTURE URBAN DEVELOPMENT.

The Western City District Plan identified the Fairfield/ Penrith Rural Lands Urban Investigation Area (UIA) as an area for investigation for urban development.

The UIA is located in close proximity to the Western Sydney Airport (WSA) and Western Sydney Aerotropolis precinct that represents catalysts for significant transformation and provision of major infrastructure to service growth within the Western City.

Council has been working collaboratively with the Greater Sydney Commission (GSC), State Agencies and Penrith City Council in developing draft Structure Plan Options for the UIA. This process has also involved extensive community consultation in developing a vision for the area.

Following initial community consultation, Council in the second half of 2019 will be seeking to finalise a preferred Structure Plan Option for the UIA for further consideration. Following this, more detailed precinct planning will need to be undertaken to gain a closer understanding of the capacity of the UIA for urban development including infrastructure needs.

In the event that a future passenger rail line from Parramatta to the Western Sydney Airport is built, a strategic centre could evolve in the western part of the City. Prairiewood already benefits from proximity to large scale industrial lands and key facilities and services including Fairfield Hospital, Parramatta to Liverpool Bus T-Way, Fairfield Showground and Prairiewood Leisure Centre.

Council will work collaboratively with the GSC, Department of Planning, Industry and Environment (DPIE), State agencies and other stakeholders in investigating the future potential of Prairiewood Town Centre to support major urban renewal in this part of the City.

Council will also continue to examine similar opportunities for growth and renewal in other parts of the City as a result of major new infrastructure and services becoming available.

This Planning Priority responds to the following planning priorities of the Western City District Plan:

- W3 Providing services and social infrastructure to meet people's changing needs
- W4 Fostering healthy, creative, culturally rich and socially connected communities
- W5 Providing housing supply, choice and affordability with access to jobs, services and public transport

This Planning Priority responds to the goals of the 2016-2026 Fairfield City Plan:

Theme 2 – Goal A – An accessible and liveable city

Planning Priority 3 – Actions

-
- 3.1** Council will collaborate with Greater Sydney Commission, Department of Planning, Industry and Environment and Penrith City Council to prepare structure plans and precinct plans for the Horsley Park – Mount Vernon Urban Investigation Area (UIA).
-
- 3.2** Council will collaborate with Greater Sydney Commission and the Department of Planning, Industry and Environment to investigate Prairiewood Town Centre as a future strategic centre based on the potential future railway station.
-
- 3.3** Council will examine the potential for other areas for future urban renewal based on the delivery of new regional infrastructure.
-



Planning Priority 4

PROVIDE ATTRACTIVE, HEALTHY, ACCESSIBLE AND SAFE PLACES FOR THE WHOLE COMMUNITY.

Apartment living can be a great experience when they are well designed and provide communal facilities and access to open space. Without adequate and accessible public and private open space, there are a range of negative outcomes particularly for children and in areas of high social and economic disadvantage.

Open space and civic spaces need to support community celebration, cultural and creative outcomes, and enable health and fitness improvements to respond to higher rates of obesity and poorer local health outcomes. Open space needs to provide for respite from the increasingly hot climate, particularly for those living in small apartments or who are unable to afford cooling. Open space will need to be accessible, multipurpose, flexible as this is also more sustainable for Council to provide and maintain.

A number of urban design studies have either been completed or are underway for the City's centres. The Fairfield City Centre Key Sites Urban Design Study 2018 recommends new building heights and/or floor space ratios for sites greater than 2,500m², along with opportunities to deliver improvements to pedestrian/vehicular connections, civic plazas and new open space. An additional 4,000 dwellings possible in the Fairfield City Centre above those permitted by existing controls. Realising this additional development potential and associated community benefits is subject to landowner initiated planning proposals and endorsement.

The Fairfield Heights and Villawood Town Centre Urban Design Studies 2018 provide the capacity for an additional 2,000 apartments. Council initiated planning proposals seek to implement height of building, minimum site area map amendments for Fairfield Heights, as well as height of building, floor space ratio, minimum site area map amendments and land use zoning changes to improve open space provision in Villawood to permit the additional development potential and open space provision recommended by the urban design studies.

Desired public domain outcomes will help inform contribution plan levies as well as potential opportunities for community benefits facilitated through the framework of Council Planning Agreements Policy.

The provision of new housing in and around town centres will also be guided by Council urban design studies and strategic investigations aimed at promoting well designed, accessible and safe places.

This Planning Priority responds to the planning priorities of the Western City District Plan:

- W3 Providing services and social infrastructure to meet people's changing needs
- W4 Fostering healthy, creative, culturally rich and socially connected communities
- W5 Providing housing supply, choice and affordability with access to jobs, services and public transport

This Planning Priority responds to the goals of the 2016-2026 Fairfield City Plan:

Theme 1 – Goal B – Healthy and active community

Theme 1 – Goal C – A safe community

Theme 2 – Goal A – An accessible and liveable city



Planning Priority 4 – Actions

- | | |
|------------|--|
| 4.1 | Council will undertake urban design studies for key centres that deliver attractive, healthy, accessible and safe places in addition to those adopted in 2018 (Fairfield City Centre Key Sites, Fairfield Heights and Villawood): Cabramatta, Fairfield (remainder of City Centre), Smithfield, Canley Vale and smaller neighbourhood centres at Carramar and Yennora. |
| 4.2 | Council will update its Development Control Plans to include tailored development controls which reflect the recommendations and outcomes of the Urban Design Studies and provide attractive, healthy, accessible and safe town centres. |
| 4.3 | Council will prepare a Public Domain Plans for all town centres. |
| 4.4 | Council will implement the Public Domain Plans outcomes and recommendations through Councils works program. |
| 4.5 | Council will encourage high quality developments in suitable locations with supported infrastructure that improve the local character of the area with a focus on sustainability and technology. |
| 4.6 | Council will encourage design excellence, and ensure that design recommendations in the Urban Design Studies are reflected in the LEP and DCP controls. |
| 4.7 | Council will use a place based approach in its planning for local centres to encourage walking and cycling. |



Moon Festival, Freedom Plaza, Cabramatta



Planning Priority 5

PROTECT THE CITY'S HERITAGE

Aboriginal people have lived in the Fairfield area for thousands of years, with their presence shaping the land encountered by the first Europeans and giving places like Cabramatta, Carramar and Yennora their name.

Aboriginal people have played an active part in Fairfield's history over the last century and continue to shape its present and future. Council adopted a study in 2017 to provide a basis for Aboriginal heritage management and a resource which identifies known Aboriginal history.

There are approximately 100 listed heritage items in Fairfield City, with State listed items including Horsley Homestead in Horsley Park. The original Homestead was surrounded with thousands of hectares of agricultural lands. Despite development in the area, the Homestead retains a rural setting.

The waterways of Fairfield City are intrinsic to the cultural heritage values of the City. These were originally used by the Aboriginal peoples of the Cumberland Plain for movement through the landscape, to source food, and for cultural activities and settlement.

This was followed by European settlement that also relied on the waterways to support agriculture and recreation activities. Council will continue to acknowledge, protect and celebrate these attributes of the local waterways. Council is also meeting the challenge for preservation of heritage items in the City to ensure their enjoyment and understanding of current and future generations through targeted programs, including the Fairfield Museum at Smithfield which regularly showcases a glimpse into Fairfield's past to local school groups.

This Planning Priority responds to the planning priorities of the Western City District Plan:

W6 Creating and renewing great places and local centres, and respecting the District's heritage

This Planning Priority responds to the goals of the 2016-2026 Fairfield City Plan:

Theme 2 – Goal A – An accessible and liveable city

Planning Priority 5 – Actions

- 5.1** Council will continue to support heritage conservation through its heritage assistance program and provide access to expert advice and guidance on development involving or in proximity to heritage assets and areas.
- 5.2** Council will develop a conservation management plan for each Council owned heritage item.
- 5.3** Council will continue to implement the findings and recommendations of the Fairfield Aboriginal Heritage Study 2016 and continue to collaborate with the Aboriginal community and the two Local Aboriginal Land Councils to identify opportunities to share Aboriginal cultural heritage where appropriate.
- 5.4** Council will undertake a Heritage Review to identify potential new heritage items and review existing items in the Fairfield LEP.



Fairfield Museum, Smithfield

INFRASTRUCTURE AND PLACES – SUPPORTING GROWTH & CHANGE



INFRASTRUCTURE & PLACES – SUPPORTING GROWTH & CHANGE



Infrastructure provision is essential to supporting our communities forecast growth over the next 20 years and in achieving a cornerstone of the Greater Sydney Region Plan of a 30 minute city. All three levels of government will need to work collaboratively to ensure that the physical and social infrastructure needed for a more accessible City, community well-being and to support changes to our economy are delivered.

In terms of local infrastructure, Council will identify and implement mechanisms for the delivery of open space, community facilities and services and transport infrastructure to deliver the 30 minute City and accommodate future needs.

This includes addressing the deficiency of east-west public transport corridors and connections to service the urban areas of Fairfield City.

Due to the cultural distinctiveness of the area there will also need to be a strong focus on cultural needs and services. Council will work with other levels of government to ensure that district and regional facilities such as the Fairfield Showground, Fairfield, Cabravale, Prairiewood Leisure Centres and Aquatopia can continue to provide for both the local and wider community needs.

The Western Sydney Parklands provides a major recreational and cultural resource for the community of both Fairfield and the region. Council will continue to work with the Western Sydney Parklands Trust in maximising the Parklands as a great place for the community, a green interface with adjoining urban areas and in providing bicycle and pedestrian links.

Council will also collaborate with State and Federal governments on the delivery of new and upgraded essential services such as water, sewerage, drainage, telecommunications and energy facilities that are required to support our growing population. This will be particularly critical in areas such as the Horsley Park/Mount Vernon Urban Investigation Area (UIA) should it transition to a more urbanised environment over the next 20 years.

To this end, Council will continue to collaborate with the UIA Steering Committee, chaired by the Greater Sydney Commission, to maximise sustainable land use planning outcomes for the UIA and maximise opportunities arising from new infrastructure.

There also opportunities for the Fairfield community from major new district infrastructure, services and emerging technology that will help deliver the 30 minute city. These include major transformative infrastructure aligned with the new Western Sydney Airport such as the Parramatta to Western Sydney Airport rail link and Elizabeth Drive upgrade. The rail link also provides significant potential in addressing the lack of east-west public transport corridors in Fairfield City. Investigations into new strategic east-west bus corridors are also required to help address this issue.

These and other projects such as the Western Sydney Freight Line could aid in the boosting the local economy through increased connectivity and collocated infrastructure if opportunities are harnessed.

Planning Priority 6:

Ensure infrastructure is aligned to accommodate planned growth and community needs.

Planning Priority 7:

Leverage opportunities from major new district infrastructure and services and technological developments.



Planning Priority 6

ENSURE INFRASTRUCTURE IS ALIGNED TO ACCOMMODATE PLANNED GROWTH AND COMMUNITY NEEDS

Fairfield City has a number of areas that are currently in the planning process or under investigation for increased residential densities. These areas are generally in close proximity to the services and public transport and provide a foundation for the delivery of the 30 minute city. To support these proposed residential density increases, additional infrastructure will need to be provided to meet the needs of the growing community.

Council is currently undertaking a number of strategic studies (Community Needs Analysis, Open Space Study and Transport Management Plans) which will identify the community needs of the City now and into the future. This will help Council plan for what types of facilities and infrastructure is required, including measures to support the 30 minute city.

Contributions collected from additional development in the City will be critical in funding projects which provide community infrastructure, open space and other facilities required to service the future.

Fairfield City Council currently provides, manages and maintains a large amount of community infrastructure which facilitate:

- Transport and traffic movement such as roads, intersections, and roundabouts
- Commuter parking and town centre car parking
- Pedestrian and cycle movements such as footpaths and cycleways, pedestrian crossings and connections
- Community facilities and infrastructure such as libraries, multi-purpose community facilities and halls
- Open space such as new parks, embellishment of existing and new parks and a range of sport fields and facilities
- Major Sports, Community Cultural and Events at the Fairfield Showground Precinct
- Creek corridors managed to provide the City with great outdoor amenity, being cooler in the summer as well as providing for native flora and fauna habitat and improving water quality.

As part of its future infrastructure planning, Council will have regard to solutions that are environmentally sustainable including water sensitive urban design and stormwater harvesting measures.

This Planning Priority responds to the planning priorities of the Western City District Plan:

- W1 Planning for a city supported by infrastructure
- W2 Working through collaboration
- W7 Establishing the land use and transport structure to deliver a liveable, productive and sustainable Western Parkland City
- W8 Leveraging industry opportunities from the Western Sydney Airport and Badgerys Creek Aerotropolis
- W10 Maximising freight and logistics opportunities and planning and managing industrial and urban services land.

This Planning Priority responds to the goals of the 2016-2026 Fairfield City Plan:

Theme 2 – Goal B – Community assets and infrastructure are well managed into the future

Theme 2 – Goal C – Inviting and well used open spaces



Planning Priority 6 – Actions

- | | |
|-------------|---|
| 6.1 | Council will undertake a Community and Open Space Needs Study which will identify key demographic and spatial challenges that have implications for infrastructure planning including the delivery community facilities and the provision of accessible open space and recreation facilities. |
| 6.2 | Council will prepare an Open Space Strategy which will address the open space and recreation needs identified in the Community and Open Space Needs Study. |
| 6.3 | Council will implement the recommendations of the Open Space Strategy. |
| 6.4 | Council will identify priorities for new or enhanced open space, giving consideration to quality, quantity and access to open space and work undertaken by the Office of Sport on District Sport Facility Plans. |
| 6.5 | Council will prepare a community services and asset management strategy to provide for future community needs identified in the Community and Open Space Needs Study. |
| 6.6 | Council will undertake a Transport Study to identify the existing and future traffic and transport infrastructure needs. |
| 6.7 | Council will update the LEP, DCP and development contributions plans to reflect the outcomes and recommendations of the Transport Study. |
| 6.8 | Council will update its development contributions plans to incorporate the findings and recommendations of the Community and Open Space Needs Study, Open Space Strategy and Transport Study. |
| 6.9 | Council will develop as part of the structure and precinct planning for the Horsley Park – Mount Vernon Urban Investigation Area (UIA) a planning framework to manage future infrastructure needs. |
| 6.10 | Council will collaborate with State Government agencies to identify and address short falls in infrastructure provision. |



Fairfield Adventure Playground, Fairfield Park



Planning Priority 7

LEVERAGE OPPORTUNITIES FROM MAJOR NEW DISTRICT INFRASTRUCTURE AND SERVICES AND TECHNOLOGICAL DEVELOPMENTS

The State and Federal Governments are proposing to invest significant funds into major infrastructure within Fairfield City and the broader region. This infrastructure has the potential to provide more opportunities for Fairfield City residents. The Western Sydney Airport is the key new infrastructure item within the Western City District. This will open up Western Sydney and Fairfield City to the world and the opportunities that come with it, including employment and recreation activities.

The Western Sydney airport will also generate the need for other key infrastructure such as a fast rail to Parramatta and the Sydney CBD beyond. An opportunity exists for Fairfield to leverage off this key infrastructure item and provide benefits for our residents, including potential new railway stations within the Urban Investigation Area in Horsley Park and Cecil Park and at Prairiewood Town Centre. A passenger rail station in Prairiewood would provide a major catalyst for change and the establishment of the centre as a potential health, education and commercial hub.

The Bus T-Way provides connectivity to Liverpool and Parramatta for the residents in the western half of the City. There are opportunities to leverage off this existing asset and to expand the network to the Western Sydney Airport and the key areas within the City.

In addition to public transport corridors, major road network additions and freight corridors will provide better connectivity to the Western Sydney Airport and employment areas. There is an opportunity for these corridors to collocate related infrastructure (e.g. bicycle corridors) and it is critical that this be considered as part of the broader planning for this infrastructure.

Given the growth around the Western Sydney Airport and the projected increase in population of the Fairfield City, there is an opportunity for expansion of the Fairfield Hospital and surrounding medical precinct to support the growing needs of the community.

Other opportunities that will be investigated through discussions with the NSW Department of Education regarding use of school open space or hall facilities that are not accessible to the broader community outside of school hours.

This Planning Priority responds to the planning priorities of the Western City District Plan:

- W1 Planning for a city supported by infrastructure.
- W2 Working through collaboration.
- W7 Establishing the land use and transport structure to deliver a liveable, productive and sustainable Western Parkland City
- W8 Leveraging industry opportunities from the Western Sydney Airport and Badgerys Creek Aerotropolis
- W10 Maximising freight and logistics opportunities and planning and managing industrial and urban services land

This Planning Priority responds to the goals of the 2016-2026 Fairfield City Plan:

Theme 2 – Goal B – Community assets and infrastructure are well managed into the future

Theme 2 – Goal C – Inviting and well used open spaces



Planning Priority 7 – Actions

- 7.1** Council will work with the relevant State Government agencies to ensure transport decisions promote the best outcome for Fairfield City.
- 7.2** Council will undertake a Transport Study which will align State Government transport initiatives and advocate for the best land use and transport outcomes for Fairfield City including the potential for new rail stations along the Parramatta to Western Sydney Airport passenger line.
- 7.3** Council will investigate opportunities for the shared/adaptive use of open space and other community infrastructure.
- 7.4** Council will collaborate with State Government agencies to leverage the best opportunities including offsets and compensatory measures for the Fairfield City community arising from major infrastructure projects including (but not limited to): Western Sydney Freight Line, Parramatta to Western Sydney Airport rail link, Elizabeth Drive upgrade, T-way to Liverpool and Parramatta and strategic bus routes and upgrades to arterial roads.
- 7.5** Council will work with the State Government to ensure that evolving District facilities (including Western Sydney Parkland, Fairfield Showground, Cabravale Leisure Centre and Aquatopia) continue to provide for both the local and wider community needs with improved connectivity within Fairfield City.
- 7.6** Council will respond to new technology/initiatives such as electronic charging, artificial intelligence, 5G and renewable energy.
- 7.7** Council will leverage off potential major Western Sydney Airport related transport infrastructure at Prairiewood Town Centre to evolve a new strategic centre or the City.



Bring It On! music, sporting and arts festival in April each year, Fairfield Showground Precinct, Prairiewood

ENVIRONMENTAL SUSTAINABILITY



ENVIRONMENTAL SUSTAINABILITY



Holistic and integrated land use planning approaches are required to achieve environmental sustainability outcomes for the City. This includes consideration of the interrelationship and connections between terrestrial biodiversity, open space systems and creek lines that are interwoven with the urban fabric of Fairfield City.

The local waterways and green spaces are a major environmental asset for the community and important components in supporting the Western City Blue and Green Grids. These areas are also important from a broader catchment perspective as they connect to the Hawkesbury Nepean River System in the west and Georges River in the central and eastern urban areas.

In the established urban areas, the local waterways are currently the main areas for supporting canopy cover, sustaining biodiversity and providing environmental corridors across the City as well collecting all of the urban storm water runoff from the surrounding floodplain that is directed east into the Georges River.

The creek lines and green space areas of the Fairfield also play an important role in underlining the heritage attributes of the City, associated with the original Aboriginal inhabitants of the land who utilised the creek lines for settlement, food source and movement corridors, followed by European settlement that relied on the creeks in supporting recreation and agriculture activities.

Improvements to the water quality within these creeks will be essential in realising long term aspirations such as improving the water quality of Chipping Norton Lake to make it once again suitable for swimming.

The topography of the western part of the Fairfield City is significantly more undulating than the east and contributes to the scenic and landscape qualities of City. This area is also the location of the extensive environmental resources associated with the Western Sydney Parklands.

Council will update its planning controls to ensure new development follows best practice requirements in relation to managing energy, water and waste efficiently. In the western area of the City, Council will work collaboratively with the Greater Sydney Commission in delivering sustainable outcomes for the Rural Lands Urban Investigation Area in Horsley Park / Cecil Park that complements work being undertaken by the GSC in relation to the Western Parklands City (including the South Creek Catchment).

In addition, Council will continue to work with and support the ongoing initiatives of the Western Sydney Parklands Trust in promoting the Western Sydney Parklands as both a major environmental and recreational resource for the Western City District.

Planning Priority 8:

Protect areas of high natural value and environmental significance and improve the health of catchments and waterways.

Planning Priority 9:

Realise the Parkland City Vision

Planning Priority 10:

Adapt to natural hazards and environmental impacts



Figure 9: Fairfield urban area waterways



Bonnyrigg Park



Planning Priority 8

PROTECT AREAS OF HIGH NATURAL VALUE AND ENVIRONMENTAL SIGNIFICANCE AND IMPROVE THE HEALTH OF CATCHMENTS AND WATERWAYS.

The natural ecosystems of Fairfield City have been extensively modified since European settlement, with vegetation cover drastically reduced by approximately 83%. Limited areas of the original fauna habitat remain in the City.

A number of endangered or vulnerable animal and plant species can still be found in these areas particularly in locations along Prospect Creek bordering Cumberland Council and Cabramatta Creek bordering Liverpool City Council. A number of native amphibious and bird species and can also be found throughout the waterways of the City.

To maintain these areas, Council conducts a range of activities including protection of public areas used for recreation. Fairfield City's Environment Volunteer Program includes tree planting, weed removal, rubbish removal, habitat restoration, bushland regeneration, and community education.

These actions seek to address the main threats to remaining native vegetation, fauna habitat, riparian zones and ecosystem functions posed by continued urban encroachment, declining water quality and weed invasion. Council will continue to follow an integrated catchment wide approach to improve the health of catchments and waterways to support community values and aspirations for environmental and recreational uses.

This includes harnessing the principles of water sensitive urban design and catchment management measures aimed at reducing impacts of stormwater impacts, improve water quality, assist the restoration of ecosystems, protect vulnerable and endangered flora and fauna.

This Planning Priority responds to the planning priorities of the Western City District Plan:

- W12 Protecting and improving the health and enjoyment of the District's waterways
- W13 Creating a Parkland City urban structure and identity, with South Creek as a defining spatial element
- W14 Protecting and enhancing bushland and biodiversity
- W15 Increasing urban tree canopy cover and delivering Green Grid connections

This Planning Priority responds to the goals of the 2016-2026 Fairfield City Plan:

Theme 3 – Goal A – A sustainable natural environment

Theme 3 – Goal B – Environmentally aware and active community



Planning Priority 8 – Actions

- | | |
|------------|--|
| 8.1 | Council will prepare a Biodiversity Strategy to identify and ensure the protection of areas of high natural value and environmental significance. |
| 8.2 | Council will review and update its LEP and DCP to reflect the outcomes of the Biodiversity Strategy and Open Space Strategy. |
| 8.3 | Council will review existing, and identify and map additional environmentally sensitive waterways and improve the overall catchment health and consider how LEP & DCP could support this. |
| 8.4 | Council will identify and investigate the cost benefits and funding sources for reinstating more natural conditions in highly modified urban waterways; inform local infrastructure contributions plans. |
| 8.5 | Council will identify and map areas of conservation significance within the Horsley Park – Mt Vernon Urban Investigation Area. |
| 8.6 | Council will identify opportunities to implement Water Sensitive Urban Design on public and private lands and implement measures that support water conservation. |



Native Community Nursery Volunteers, Fairfield Showground Precinct.



Planning Priority 9

REALISE THE PARKLAND CITY VISION

The main urban creeklines of Fairfield City are in public ownership, representing a significant opportunity for supporting a range of environmental outcomes associated with delivery of the Western City Parkland vision and associated green grid.

This arrangement is also central to supporting the vision for the adjoining Central River City District as the waterways and open space corridors of Fairfield City feed into the adjoining local government areas.

The Greater Sydney Region Green Grid, and expansion of the green infrastructure network, represents the critical platform for implementing sustainability outcomes for the Central River City and Western Parkland City Districts.

An extensive review of Council's Open Space and Biodiversity Strategy will be undertaken in realising an integrated approach for the delivery of the Blue and Green Grids.

Council will investigate opportunities for increased canopy cover on public land/reserves and plan for cool, green links to waterways, open space and bushland areas to support environmental, recreational and cultural values.

This Planning Priority responds to the planning priorities of the Western City District Plan:

- W13 Creating a Parkland City urban structure and identity, with South Creek as a defining spatial element
- W14 Protecting and enhancing bushland and biodiversity
- W15 Increasing urban tree canopy cover and delivering Green Grid connections
- W18 Delivering high quality open space

This Planning Priority responds to the goals of the 2016-2026 Fairfield City Plan:

Theme 3 – Goal A – A sustainable natural environment

Theme 3 – Goal B – Environmentally aware and active community

Planning Priority 9 – Actions

- | | |
|-----|--|
| 9.1 | Council will investigate opportunities for agri-business, farmers markets and food cop-ops as part of the Horsley Park – Mt Vernon UIA. |
| 9.2 | Council will identify approaches to expand urban tree canopy cover that address the low levels of existing canopy cover to improve and enhance amenity. Council will consider how this is best supported by updated LEP and DCP and other whole-of-council programs. |
| 9.3 | Council will implement the delivery of Green Grid priorities and identify how these could be best supported in updated LEP and DCP, including priority corridors outlined in the District Plan as well as any other Green Grid connections important to the local area. |
| 9.4 | Council will contribute to the delivery of Blue Grid priorities and work to make Chipping Norton Lake swimmable again with a focus on improving the environmental qualities of the five principal creeks in the east of the City and the tributaries of South Creek catchment in the west. |
| 9.5 | Council will review the land use planning provisions for waterways and riparian corridors and seek to rezone these from open space to environmental protection where this better reflects the environmental and scenic qualities of these areas. |



Planning Priority 10

ADAPT TO NATURAL HAZARDS AND ENVIRONMENTAL IMPACTS

The central and eastern areas of Fairfield City are located on an extensive floodplain that feeds into the Georges River.

Fairfield City has an ongoing program to map the extent of the floodplain and ensure that appropriate planning controls and management measures are in place to protect the built environment and community from the impacts of flooding.

Areas around Chipping Norton Lakes represent the main location for potential acid sulfate soils and are identified on maps associated with the Fairfield LEP 2013. A suite of planning controls already applies to development in proximity to these areas.

The western area of the City remains relatively undeveloped with the Western Sydney Parklands representing the main concentration of bushfire prone land in the City.

This area also comprises the Rural Lands Urban Investigation Area (UIA). As part of a land capability assessment investigations of environmental constraints (including flooding, bushfire prone land, biodiversity and slope) have been undertaken.

Further detailed investigations into these constraints will be carried out into these matters under the next stage of preparation of detailed planning for the UIA.

Recent mapping of heat Island effects in Western Sydney by the CSIRO highlights the need for a range of initiatives (e.g. housing design, increased canopy cover) to mitigate the impacts of this trend, particularly on vulnerable sections of the community.

It is worth noting that other actions in this strategy, such as active transport, will help to reduce environmental impacts at the local level by reducing vehicle trips.

This Planning Priority responds to the planning priorities of the Western City District Plan:

W20 Adapting to the impacts of urban and natural hazards and climate change

This Planning Priority responds to the goals of the 2016-2026 Fairfield City Plan:

Theme 3 – Goal A – A sustainable natural environment

Theme 3 – Goal B – Environmentally aware and active community

Planning Priority 10 – Actions

- | | |
|-------------|---|
| 10.1 | Council will align its flood risk planning controls in the LEP and DCP so that the planning provisions are consistent with the planning controls in the upstream and downstream local government areas. |
| 10.2 | Council will continue to undertake the Floodplain Risk Management Studies and Plans to manage areas susceptible to isolation or risk to property from floods. |
| 10.3 | Council will, in collaboration with other levels of government, identify approaches/opportunities that support reducing emissions and managing energy, water and waste efficiently, in line with the pathways to net-zero emissions identified in the District Plan. |
| 10.4 | Council will, as part of the future Public Domain Plans, respond to urban and natural hazards, particularly the urban heat island effect, and identify how to strengthen the resilience of important community assets and infrastructure. |
| 10.5 | Council will identify approaches to expand urban tree canopy cover that address the low levels of existing canopy cover, high levels of exposure to heat, and the vulnerability to extreme heat and heatwaves. Council will consider how this is best supported by updated LEP and DCP and other whole-of-council programs. |

STRONG & RESILIENT ECONOMY



STRONG & RESILIENT ECONOMY



Fairfield City includes one of the largest industrial areas (comprising the Smithfield/Wetherill Park Industrial Estates) in the Western Parkland City, with the highest concentration of economic activity and concentration of jobs in the City. The industrial estate has an established industry base and its competitive strengths are in advanced manufacturing, transport, logistics, trade and warehousing which significantly contribute to the NSW economy. Wetherill Park TAFE plays a complementary role in these industry clusters, further supporting industry development by providing place specific programs to facilitate industry needs and skill development as well as research and development.

It is anticipated that industry, aided by proximity to the Western Sydney Airport, will become more diversified and provide for a broader range of urban services particularly those focused on the new economy.

To plan and manage these changes Council will work with the State Government to monitor trends and developments affecting urban services land and amend its planning controls to accommodate these where appropriate. To do this, Council will use available data prepared by Department of Planning, Industry and Environment /Greater Sydney Commission regarding employment opportunities.

Efficient connectivity is a vital requirement to keep the employment lands competitive and at a sustainable condition for economic development, particularly considering population growth, key industry sectors reliance on efficient interconnected networks and rise in demand for time sensitive deliveries.

Integrating flexible land use decisions with transport improvements will lift the economic productivity of the City and create opportunities for economic development and investment attraction.

Council will also seek to leverage the opportunities for more diverse and robust jobs presented by major new transformative infrastructure such as the Western Sydney Freight Line, Western Sydney Airport (WSA) and potential new passenger rail link from Parramatta to the WSA. Specific areas of focus are the nationally significant Smithfield/Wetherill Park Industrial Estate, the urban investigation area of Horsley Park and the Prairiewood Town Centre. With the right interventions these areas could benefit from a greater range of jobs in the new economy, and in the case of Prairiewood, health, education and business hubs.

Fairfield City's town centres are also a major contributor to the economic and cultural wellbeing of the local area. Fairfield Town Centre will continue to be the main strategic centre for economic activity and employment opportunities in the established urban areas of the City. Council will also look to improve and revitalise its town centres through public domain improvements and traffic and parking improvements that make these areas more attractive, functional and safe.

Additionally, the uniqueness of the City's centres created by their multicultural character provides opportunities for food related tourism. Council will seek to promote these through the continued support and promotion of civic events such as the Lunar New Year celebrations in Cabramatta and a focus on the night-time economy. Additionally, the Western Sydney Parklands provides a unique destination for a range of tourism activities such as farmer's markets, bike riding, bushwalking and passive recreation.

Planning Priority 11:

Promote a robust economy which generates diverse services and job opportunities

Planning Priority 12:

Plan for and manage urban services land



Planning Priority 11

PROMOTE A ROBUST ECONOMY WHICH GENERATES DIVERSE SERVICES AND JOB OPPORTUNITIES

Council provide the principle platform for economic activity and employment opportunities in the City. These activities and jobs vary across a range of sectors including construction and manufacturing industries in the Wetherill Park and Smithfield Industrial areas (employing approximately 20,000 people) whilst employment activities in town centres concentrated in retailing and restaurants. There are significant opportunities throughout the City to further promote the already robust local food experience, particularly in relation to food tourism.

There are also emerging industry clusters including food manufacturing, pharmaceutical and medical support services that can assist in the transition to new economic opportunities associated with the new Western Sydney Airport and surrounding employment areas.

This Planning Priority responds to the planning priorities of the Western City District Plan:

W11 Growing investment, business opportunities and jobs in strategic centres

This Planning Priority responds to the goals of the 2016-2026 Fairfield City Plan:

Theme 4 – Goal A – Range of resilient businesses

Theme 4 – Goal C – Diverse employment and job opportunities

Planning Priority 11 – Actions

-
- 11.1** Council will continue to collaborate with the Department of Planning, Industry and Environment to review data which informs the Employment Lands Monitor and will use this information to inform decisions about the supply and demand for employment land within Fairfield City.

 - 11.2** Council will approach Health Infrastructure NSW, Department of Planning and other relevant State agencies to investigate a new Health and/or Education Precinct around Fairfield Hospital in Prairiewood.

 - 11.3** Council will consider amendments to the LEP and DCP which facilitate new tourism opportunities and opportunities for tourist and visitor accommodation.

 - 11.4** Council will undertake a review of the Business Lands Study which will consider business zoned land with Fairfield City to promote a robust economy and maximise job opportunities and address the employment targets in the Western City District Plan.

 - 11.5** Council will as part of the Transport Study investigate car parking management strategies/approaches in town centres to ensure viable and accessible centres.

 - 11.6** Council will include provisions in the DCP to deliver improved urban design outcomes and improve the overall appearance of town centres.

 - 11.7** Council will investigate new policies and DCP controls to encourage the night time economy in town centres.

 - 11.8** Council will undertake Urban Design Studies for its local centres that incorporate land use and transport approaches which provide both jobs and housing in close proximity to railway stations to promote the 30 minute city.



Planning Priority 12

PLAN FOR AND MANAGE URBAN SERVICES LAND

Comprising the Wetherill/Smithfield Industrial Precinct, which is of national economic significance, it is critical that land use and transport planning retains and manages this area for the future.

This will require Council to collaborate with State planning agencies to ensure that the role and function of this precinct considers wider regional factors affecting the supply and demand for urban services. Presently, the major considerations include:

- New supply of land for urban services in the Western Sydney Employment Area (WSEA) and Western Sydney Airport (WSA) precinct.
- Planning of the route of the Western Sydney Freight Line (WSFL).
- Movement of traditional industry westwards as land in the east is rezoned.

These factors create threats and opportunities for urban services zoned land in the Fairfield local government area. It is critical that these are considered as part of local and regional planning processes. In this regard, Council is presently working with the Greater Sydney Commission (GSC) on a Western Sydney Urban Services Study. Council will also be undertaking its own employment lands study as part of the Fairfield LEP 2020 project that will distil the findings of the regional investigations into local planning provisions. These will include the potential for new urban services lands in parts of the Rural Lands Urban Investigation Area in the northern portion of Horsley Park.

Wider freight and logistics issues, including the potential for new rail sidings as part of the WSFL and the impacts of heavy vehicles and last mile delivery vehicles will be addressed through related processes and transport studies.

This Planning Priority responds to the planning priorities of the Western City District Plan:

W11 Growing investment, business opportunities and jobs in strategic centres

This Planning Priority responds to the goals of the 2016-2026 Fairfield City Plan:

Theme 4 – Goal A – Range of resilient businesses

Theme 4 – Goal C – Diverse employment and job opportunities

Planning Priority 12 – Actions

-
- 12.1** Council will continue to work with the Greater Sydney Commission and adjoining Councils to review and manage urban services land, including addressing forecast increases in freight and logistics servicing need.
-
- 12.2** Council will investigate opportunities for existing urban services land that may arise via rail sidings associated with the Western Sydney Freight Line concerning increased job numbers particularly those allied to the new economy.
-
- 12.3** Council will investigate, as part of the structure planning process for the Rural Lands Urban Investigation Area, opportunities for new urban services land proximate to the Western Sydney Freight Line and Western Sydney Employment Area.
-

GOOD GOVERNANCE – ADVOCACY & CONSULTATION



GOOD GOVERNANCE – ADVOCACY & CONSULTATION



Good governance and leadership ensures that the community has access to information and is able to participate in the development of policies and decisions that affect them. Decision making, especially in the public sector, must be transparent, objective and accountable. It is important that the LSPS reflects the views of the Fairfield City community, while working within the framework of the NSW planning system.

The actions in the LSPS will be included in Council's Integrated Planning and Reporting (IP&R) Framework and reflected in the next Fairfield City Plan (Community Strategic Plan), 4 year Delivery Program and 1 year Operational Plan.

The priorities and actions in the LSPS will be monitored and updated to ensure that they continue to reflect the views of the community and any changing priorities from the District Plan.

Council will also continue to advocate for and represent the Fairfield City community with State and Federal government agencies. This will be achieved through participation in the Western Sydney City Deal and other avenues to ensure that the services and infrastructure relating to land use planning and transport are coordinated in line with the planning priorities and actions identified in LSPS.

Planning Priority 13:
Ensure a well-engaged and informed community

Planning Priority 14:
Monitor and report on the delivery of the LSPS actions

Planning Priority 15:
Review the LSPS to adapt to changing priorities and circumstances

Planning Priority 16:
Advocate for and represent the Fairfield City community



Pai Lau gate in Freedom Plaza, Cabramatta



Planning Priority 13

ENSURE A WELL-ENGAGED AND INFORMED COMMUNITY

Community engagement is an essential part of the way Council works with the community and is a way for Council to partner with the community to plan for the City's future.

It is important to ensure that the community and relevant stakeholders are engaged and involved in the preparation and implementation of the LSPS and the future actions to deliver the planning priorities.

To ensure a well-engaged and informed community, Council will undertake a range of engagement measures and techniques including promotion of the draft documents in print and electronic media, direct liaison with relevant stakeholders and the community, face-face meetings, workshop and briefings.

Feedback received on all engagement activities will be considered and incorporated into the final documents and programs.

This Planning Priority responds to the planning priorities of the Western City District Plan:

W21 Preparing local strategic planning statements informed by local strategic planning

This Planning Priority responds to the goals of the 2016-2026 Fairfield City Plan:

Theme 5 – Goal A – Decision making processes are open and transparent

Theme 5 – Goal B – A well engaged and informed community

Theme 5 – Goal D – Strengthen relationships through partnerships with our community

Planning Priority 13 – Actions

-
- 13.1** Council will actively consult and engage the community on strategic land use plans and policies, utilising a diverse range of communication methods and in accordance with the requirements of the Environmental Planning & Assessment Act and Regulation and Council's community engagement strategy (currently in preparation) to ensure that the community's views are considered in decision making and planning.
-
- 13.2** Council will provide the local community with regular feedback about future plans and developments that impact the city.
-



Planning Priority 14

MONITOR AND REPORT ON THE DELIVERY OF THE LSPS ACTIONS

Monitoring and reporting will provide transparency to the community and other stakeholders.

Performance measures have developed to monitor the performance of the LSPS actions. The monitoring and reporting procedures are included in the actions of the LSPS and will be incorporated into Council's broader corporate reporting framework.

This means that a clear line of sight is established between the planning priorities and actions in this Local Strategic Planning Statement, the Fairfield City Plan and the Western City District Plan, underpinned by coordinated monitoring and updating.

This Planning Priority responds to the planning priorities of the Western City District Plan:

W22 Monitoring and reporting on the delivery of the plan

This Planning Priority responds to the goals of the 2016-2026 Fairfield City Plan:

Theme 5 – Goal A – Decision making processes are open and transparent

Theme 5 – Goal B – A well engaged and informed community

Planning Priority 14 – Actions

-
- 14.1** Council will actively monitor and report on the delivery of the LSPS actions through the Integrated Planning and Reporting (IP&R) Framework including reflecting the actions in the Fairfield City Plan (Community Strategic Plan), 4 year Delivery Program and 1 year Operational Plan.

 - 14.2** Council's Strategic Land Use Planning section will monitor and report on the delivery of LSPS actions through the IP&R process.

 - 14.3** Council will ensure that forms accurately identify the information requirements for development applications to enable monitoring of targets and that this information is recorded in Council's internal Authority (database) to enable the efficient monitoring of development.

 - 14.4** Council will implement a system that enables collected data sets to be extracted for evaluation in both mapped and tabular form for relevant LSPS actions and review.



Planning Priority 15

REVIEW THE LSPS TO ADAPT TO CHANGING PRIORITIES AND CIRCUMSTANCES

Under the relevant legislation, this Statement is required to be reviewed no later than every 7 years, and will be updated to reflect the outcomes of to align with Council's corporate planning.

It should be noted that this Local Strategic Planning Statement is the first for Fairfield City and includes as actions the undertaking of a number of studies which will form the basis for delivery of the vision: Fairfield 2040 - Shaping a Diverse City. Accordingly, the outcomes of these studies will inform the land use plans and development controls to achieve the vision.

Therefore the next review of this Statement will reflect the outcomes and recommendations of these studies and the plans and controls which implement them.

The outcomes of some of the major rail infrastructure initiatives potentially affecting the City will have significant implications for actions in this Local Strategic Planning

Statement and will need to be reflected in future reviews. Likewise, changing community priorities and expectations will also need to be considered in revised versions of the Local Strategic Planning Statement.

This Planning Priority responds to the planning priorities of the Western City District Plan:

W21 Preparing local strategic planning statements informed by local strategic planning

This Planning Priority responds to the goals of the 2016-2026 Fairfield City Plan:

Theme 5 – Goal A – Decision making processes are open and transparent

Theme 5 – Goal B – A well engaged and informed community

Planning Priority 15 – Actions

- 15.1** Council will undertake a review and update the LSPS (including the themes and planning priorities) at a minimum as required by the Environmental Planning and Assessment Act and Regulation.



Planning for future generations



Planning Priority 16

ADVOCATE FOR AND REPRESENT THE FAIRFIELD CITY COMMUNITY

Council in exercising its land use and planning functions will use the planning priorities and actions in this Local Strategic Planning Statement to advocate and represent the Fairfield City community. These will be embedded into Council's corporate planning and reporting processes which ensure a whole of Council approach to realising all aspects of the vision: Fairfield 2040 - Shaping a Diverse City.

This Planning Priority responds to the goals of the 2016-2026 Fairfield City Plan:

Theme 5 – Goal B – A well engaged and informed community

Theme 5 – Goal D – Strengthen relationships through partnerships with our community

This Planning Priority responds to the planning priorities of the Western City District Plan:

W21 Preparing local strategic planning statements informed by local strategic planning

Planning Priority 16 – Actions

- | | |
|------|--|
| 16.1 | Council will continue to develop and maintain effective partnerships between Government agencies, through the Western Sydney Planning Partnership and other forums/groups, and with community groups to achieve the planning priorities and actions identified in the Fairfield City Local Strategic Planning Statement. |
| 16.2 | Council will undertake advocacy on behalf of the community in relation to land use and transport planning matters to achieve the Vision of the LSPS. |



Community celebrations, Cabramatta

IMPLEMENTATION, MONITORING & REPORTING



The LSPS will communicate the long-term 20 year land use strategy for Fairfield City to 2040 which will be actioned through the following Council plans and policies:

Fairfield Local Environmental Plan 2013	The Fairfield LEP is the principal statutory document which establishes the planning controls for Fairfield City. Through zoning, development standards and other local provisions the LEP provides the legal framework to ensure development is appropriate and reflects the community vision for land use. Council has received significant funding associated with the Western Sydney City Deal to fund the Accelerated LEP Review Program. This is being informed by this LSPS.
Fairfield Development Control Plans	Fairfield DCPs are non-statutory plans that provide detailed planning and design guidelines, and development controls to support the LEP.
Fairfield Strategic Plans & Studies	Fairfield Strategic Plans and Studies provide broader guidance on desired future development and/or planning direction for different locations or sectors of the City. They include detailed research and analysis that may lead to changes to LEP, DCP and development contributions.
Fairfield City Development Contributions Plans	Development Contributions Plans identify collect contributions toward public infrastructure required as a consequence of their development.
Fairfield City Planning Agreements Policy	Planning Agreements are a mechanism for delivery of public benefits above and beyond traditional development contributions.
Fairfield local policies	Fairfield local policies are non-statutory policies that provide a framework for consideration of development on Council owned or managed land that do not require development approval under the EP&A Act. Typically this includes exempt development such as temporary use of Council land, applications for outdoor dining and busking activities.

PLANNING PROPOSALS (LEP AMENDMENTS)

Proposed developments which align to the strategic planning direction in the Local Strategic Planning Statement may require changes to land use zoning and/or development standards (such as height of building or floor space ratio) to occur before a development application can be submitted. In this case, an amendment to the Local Environmental Plan would be required.

be prepared by Council or by applicants. Alignment to the strategic direction within the LSPS will be a significant consideration when determining whether an LEP amendment will proceed.

More information on amendments to the LEP can be found in DPIE's 'A guide to preparing planning proposals.'

Amendments to the LEP are subject to planning proposals in accordance with section 3.4 of the EP&A Act 1979. Planning proposals to amend the LEP may either



LSPS ACTION PLAN

This LSPS contains a detailed Action Plan. This sets out the actions, responsibilities, timeframe and monitoring measures to achieve each of the 16 planning priorities identified in the LSPS.

MONITORING AND REVIEW

Council will monitor, review and report on the LSPS to ensure that the planning priorities are being achieved and will use the existing Integrated Planning and Reporting (IP&R) framework under the Local Government Act 1993 for the purpose of monitoring implementation of the LSPS.

Council is required to undertake a full review of the LSPS no later than 2027. However changing circumstances and the benefits of aligning the LSPS with Council's overarching community strategic planning and IP&R framework are likely to require earlier updates of the LSPS.

Regular reviews will ensure that the LSPS reflects the vision the community has for the future of Fairfield City and is aligned to the latest trends and information available about the environment and the community's social and economic needs.

FUNDING AND INVESTMENT

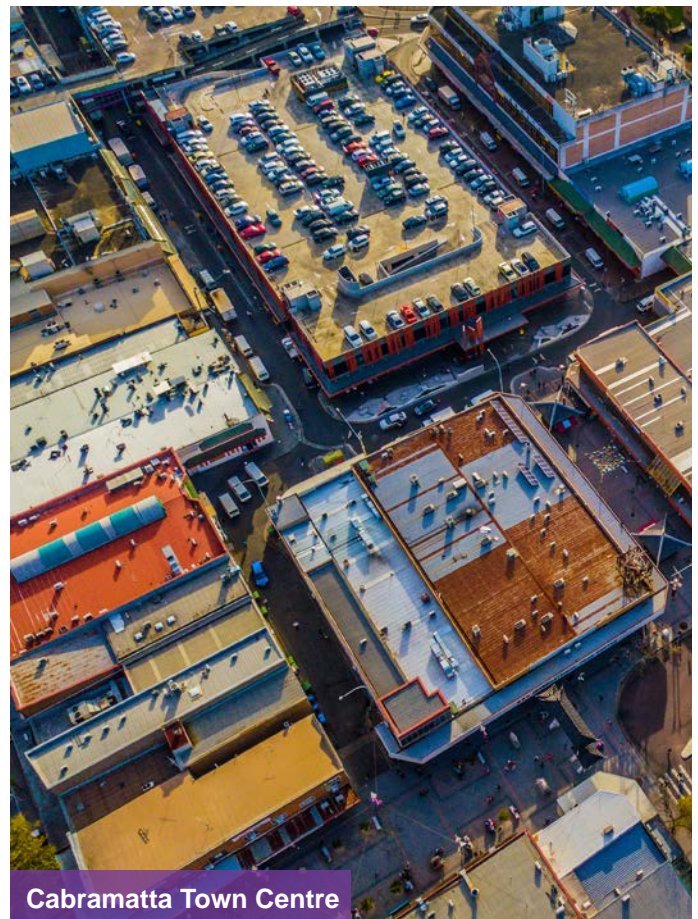
The LSPS will play an important role in Council's resourcing strategy, with preparation of strategies and studies required by this plan funded in the 4-year delivery program and annual operational plans.

Council has received a funding grant from the State and Federal government to undertake the Accelerated LEP Review program which will be informed by this LSPS.

EXISTING GOVERNANCE ARRANGEMENTS AND PARTNERSHIPS

Existing governance arrangements such as reporting to the GSC will be utilised to support effective approaches to cross boundary issues. The need to work effectively with other councils in the region recognises the wider role that Council's strategic planning and decision-making plays in achieving the objectives of the Western City District Plan. It also recognises the potential impact that strategically important decisions taken by Council regarding critical infrastructure, environmental issues, housing, investment and a range of other topics covered in the LSPS may have on the plans of neighbouring councils.

The LSPS also provides a framework for the coordinated action of many other partners in delivery. Council will continue to work hard to establish effective partnerships with State government agencies and other organisations to support the realisation of the plan.



Cabramatta Town Centre

ACTION PLAN



This LSPS contains a detailed Action Plan. This sets out the actions, responsibilities, timeframe and monitoring measures to achieve each of the 16 planning priorities identified in the LSPS.



Cabramatta Town Centre with Liverpool City Centre in the background.

Short Term
(Years 1-5)
2019-2024

Medium Term
(Years 6-10)
2025-2030

Long Term
(Years 11-20)
2031-2040

COMMUNITY WELL-BEING – HEALTHY & LIVEABLE PLACES



- Planning Priority 1:** Provide housing that accommodates the needs of existing and future residents.
- Planning Priority 2:** Deliver greater housing diversity and affordability to meet the changing needs of the community.
- Planning Priority 3:** Plan for and manage areas identified for future urban development.
- Planning Priority 4:** Provide attractive, healthy and safe places for the whole community.
- Planning Priority 5:** Protect the city's heritage.

PLANNING PRIORITY	ACTIONS		TIMEFRAME	RESPONSIBLE	MEASURES
Planning Priority 1 Provide housing that accommodates the needs of existing and future residents.	1.1	Council is preparing a Local Housing Strategy in accordance with the Western City District Plan (Planning Priority W5) which will provide housing supply with access to jobs, services and public transport to meet existing and future demand of the community and having regard to cross boundary housing markets.	Short term	Fairfield City Council	Project is completed through IN621-1 – Local Housing Strategy (Accelerated LEP Review Program).
	1.2	Council is investigating the following issues as part of the Local Housing Strategy: secondary dwellings, occupancy rates, demand for car parking, current and potential dwelling supply, impacts on services, site coverage and effects on overland flow and environment.	Short term	Fairfield City Council	Project is completed through IN621-1 – Local Housing Strategy (Accelerated LEP Review Program).
	1.3	Council will review its LEP and update planning controls to implement the recommendations and directions made in the Local Housing Strategy and reflected in this statement.	Short term	Fairfield City Council	Project is completed through IN621-13 – Fairfield LEP Review (Accelerated LEP Review Program).
	1.4	Council is working with the GSC to deliver Council's medium and long term housing strategy targets in coordination with the Councils within the Western City District, taking into account infrastructure timing and capacity.	Medium to long term	Fairfield City Council Greater Sydney Commission Relevant State Government Agencies	Realisation of medium and long term housing targets.



PLANNING PRIORITY	ACTIONS	TIMEFRAME	RESPONSIBLE	MEASURES
	1.5 Council will monitor, review and update the Local Housing Strategy to ensure it remains relevant.	Medium term	Fairfield City Council	Number of strategies, plans and policies reviewed and updated. Note: This action will be delivered through the Strategic Land Use Planning Service Statement as identified in Council's Delivery Program and Operational Plan.
Planning Priority 2 Deliver greater housing diversity and affordability to meet the changing needs of the community	2.1 Council will prepare a Local Housing Strategy in accordance with the Western City District Plan (Planning Priority W5) which will address housing choice and affordability.	Short term	Fairfield City Council	Project is completed through IN621-1 – Local Housing Strategy (Accelerated LEP Review Program).
	2.2 Council will consider, as part of the Local Housing Strategy, the range of housing needs of the community.	Short term	Fairfield City Council	Project is completed through IN621-1 – Local Housing Strategy (Accelerated LEP Review Program).
	2.3 Council will develop an Affordable Housing Strategy which will identify affordable housing needs and targets and investigate a range of affordable housing types including secondary dwellings, boarding housings, multi dwelling housing and residential apartments and in line with the Western City District Plan.	Short term	Fairfield City Council Greater Sydney Commission Other Western Sydney Councils	Project is completed through IN621-1 – Local Housing Strategy (Accelerated LEP Review Program).
	2.4 Council will review its LEP and update planning controls to implement the recommendations and directions made in the Affordable Housing Strategy and reflected in this statement.	Short term	Fairfield City Council Department of Planning, Industry and Environment	Project is completed through IN621-13 – Fairfield LEP Review Accelerated LEP Review Program)



PLANNING PRIORITY	ACTIONS	TIMEFRAME	RESPONSIBLE	MEASURES
	<p>2.5 Council will review its LEP and update planning controls to implement the recommendations and directions made in the Affordable Housing Strategy and reflected in this statement.</p>	Medium term	<p>Fairfield City Council</p> <p>Greater Sydney Commission</p> <p>Department of Planning, Industry and Environment</p> <p>LHC</p> <p>Community Housing Providers</p>	<p>Number of affordable housing stock in Fairfield City.</p> <p>Note: This action will be delivered through the Strategic Land Use Planning Service Statement as identified in Council's Delivery Program and Operational Plan.</p>
	<p>2.6 Council will monitor, review and update the Local Housing Strategy to ensure it remains relevant.</p>	Medium term	<p>Fairfield City Council</p>	<p>Number of strategies, plans and policies reviewed and updated.</p> <p>Note: This action will be delivered through the Strategic Land Use Planning Service Statement as identified in Council's Delivery Program and Operational Plan.</p>
<p>Planning Priority 3 Plan for and manage areas identified for future urban development</p>	<p>3.1 Council will collaborate with GSC, DPIE and Penrith City Council to prepare structure plans and precinct plans for the Horsley Park – Mount Vernon Urban Investigation Area (UIA).</p>	Short to medium term	<p>Fairfield City Council</p> <p>Penrith City Council</p> <p>Greater Sydney Commission</p> <p>Department of Planning, Industry and Environment</p> <p>Relevant State Government Agencies</p>	<p>Final Horsley Park – Mount Vernon UIA Structure/Precinct Plan (as relevant).</p>



PLANNING PRIORITY	ACTIONS	TIMEFRAME	RESPONSIBLE	MEASURES
	<p>3.2 Council will collaborate with GSC, DPIE to investigate Prairiewood Town Centre as a future strategic centre based on the potential future railway station.</p>	Ongoing	<p>Fairfield City Council</p> <p>Greater Sydney Commission</p> <p>Department of Planning, Industry and Environment</p>	<p>Number of meetings participated in as part of State Government working groups.</p> <p>Note: This action will be delivered through the Strategic Land Use Planning Service Statement as identified in Council's Delivery Program and Operational Plan.</p>
	<p>3.3 Council will examine the potential for other areas for future urban renewal based on the delivery of new regional infrastructure.</p>	Ongoing	<p>Fairfield City Council</p> <p>Greater Sydney Commission</p> <p>Department of Planning, Industry and Environment</p>	<p>Number of meetings participated in as part of State Government working groups.</p> <p>Note: This action will be delivered through the Strategic Land Use Planning Service Statement as identified in Council's Delivery Program and Operational Plan.</p>
<p>Planning Priority 4 Provide attractive, healthy and safe places for the whole community</p>	<p>4.1 Council will undertake urban design studies for key town and neighbourhood centres that deliver attractive, healthy, accessible and safe places in Fairfield, Cabramatta, Smithfield, Canley Vale, Carramar and Yennora.</p>	Short term	Fairfield City Council	Project is completed through IN621-3 – Urban Design Study (Accelerated LEP Review Program).
	<p>4.2 Council will update its Development Control Plans to include tailored development controls which reflect the recommendations and outcomes of the Urban Design Studies and provide attractive, healthy, accessible and safe town centres.</p>	Short term	Fairfield City Council	Project is completed through IN621-15 – Fairfield DCP Review (Accelerated LEP Review Program).



PLANNING PRIORITY	ACTIONS		TIMEFRAME	RESPONSIBLE	MEASURES
	4.3	Council will consider, as part of the Local Housing Strategy, the range of housing needs of the community.	Short term	Fairfield City Council	Project is completed through IN621-1 – Local Housing Strategy (Accelerated LEP Review Program).
	4.4	Council will implement the Public Domain Plans outcomes and recommendations through Councils works program.	Medium to long term	Fairfield City Council	Public domain works completed in accordance with the Public Domain Plans. Note: This action will be delivered through the Place Management & Economic Development Service Statement as identified in Council's Delivery Program and Operational Plan.
	4.5	Council will encourage high quality developments in suitable locations with supported infrastructure that improve the local character of the area with a focus on sustainability and technology.	Short term and ongoing	Fairfield City Council	Number of community feedback on the quality of new developments. Note: This action will be delivered through the Strategic Land Use Planning Service Statement as identified in Council's Delivery Program and Operational Plan.
	4.6	Council will encourage design excellence, and ensure that design recommendations in the Urban Design Studies are reflected in the LEP and DCP controls.	Short term	Fairfield City Council	Project is completed through IN621-13 – Fairfield LEP Review and IN621-15 – Fairfield DCP Review (Accelerated LEP Review Program).
	4.7	Council will collaborate with GSC, DPIE to investigate Prairiewood Town Centre as a future strategic centre based on the potential future railway station.	Short term	Fairfield City Council	Project is completed through IN621-3 – Urban Design Study, IN621-7 Open Space Study / Strategy and IN621-21 – Public Domain Plans (Accelerated LEP Review Program).



PLANNING PRIORITY	ACTIONS		TIMEFRAME	RESPONSIBLE	MEASURES
Planning Priority 5 Protect the city's heritage	5.1	Council will continue to support heritage conservation through its heritage assistance program and provide access to expert advice and guidance on development involving or in proximity to heritage assets and areas.	Short term and ongoing	Fairfield City Council Office of Environment & Heritage	Project is completed through the Strategic Land Use Planning Major Program (MPSLUP07 and MPSLUP08) as identified in Council's Delivery Program and Operational Plan. Number of heritage advice provided on development.
	5.2	Council will develop a conservation management plan for each Council owned heritage item.	Medium term and ongoing	Fairfield City Council	Project is completed through the Strategic Land Use Planning Major Program as identified in Council's Delivery Program and Operational Plan.
	5.3	Council will continue to implement the findings and recommendations of the Fairfield Aboriginal Heritage Study 2016 and continue to collaborate with the Aboriginal community and the two Local Aboriginal Land Councils to identify opportunities to share Aboriginal cultural heritage where appropriate.	Ongoing	Fairfield City Council	Project is completed through the Strategic Land Use Planning Major Program as identified in Council's Delivery Program and Operational Plan.
	5.4	Council will undertake a Heritage Review to identify potential new heritage items and review existing items in the Fairfield LEP.	Short term	Fairfield City Council	Project is completed through IN621-9 – Heritage Study (Accelerated LEP Review Program).

INFRASTRUCTURE & PLACES – SUPPORTING GROWTH & CHANGE



Planning Priority 6:

Ensure infrastructure is aligned to accommodate planned growth and community needs.

Planning Priority 7:

Leverage opportunities from major new district infrastructure and services and technological developments.

PLANNING PRIORITY	ACTIONS		TIMEFRAME	RESPONSIBLE	MEASURES
Planning Priority 6 Ensure infrastructure is aligned to accommodate planned growth and community needs	6.1	Council will undertake a Community and Open Space Needs Study which will identify key demographic and spatial challenges that have implications for infrastructure planning including the delivery community facilities and the provision of accessible open space and recreation facilities.	Short term	Fairfield City Council	Project is completed through IN621-5 – Community and Open Space Needs Study (Accelerated LEP Review Program).
	6.2	Council will prepare an Open Space Strategy which will address the open space and recreation needs identified in the Community and Open Space Needs Study.	Short term	Fairfield City Council	Project is completed through IN621-7 – Open Space Study / Strategy (Accelerated LEP Review Program).
	6.3	Council will implement the recommendations of the Open Space Strategy.	Medium term	Fairfield City Council	Projects are completed through Council's Delivery Program and Operational Plan.
	6.4	Council will identify priorities for new or enhanced open space, giving consideration to quality, quantity and access to open space and work undertaken by the Office of Sport on District Sport Facility Plans.	Short term	Fairfield City Council	Project is completed through IN621-7 – Open Space Study / Strategy (Accelerated LEP Review Program).
	6.5	Council will prepare a community services and asset management strategy to provide for future community needs identified in the Community and Open Space Needs Study.	Medium term	Fairfield City Council	Project is completed through the Asset Management – Strategy Major Program in Council's Delivery program and Operational Plan



PLANNING PRIORITY	ACTIONS		TIMEFRAME	RESPONSIBLE	MEASURES
	6.6	Council will undertake a Transport Study to identify the existing and future traffic and transport infrastructure needs.	Short term	Fairfield City Council Roads and Maritime Services/ Transport for NSW Transport for NSW	Project is completed through IN621-8 – Transport Study / Strategy (Accelerated LEP Review Program).
	6.7	Council will update the LEP, DCP and development contributions plans to reflect the outcomes and recommendations of the Transport Study.	Short to medium term	Fairfield City Council	Project is completed through IN621-13 – Prepare Planning Proposal, IN621-15 – Development Contribution Plan Review, IN1621 – Fairfield LEP Review (Accelerated LEP Review Program).
	6.8	Council will update its development contributions plans to incorporate the findings and recommendations of the Community and Open Space Needs Study, Open Space Strategy and Transport Study.	Short to medium term	Fairfield City Council	Project is completed through IN621-15 – Development Contribution Plan Review (Accelerated LEP Review Program).
	6.9	Council will develop as part of the structure and precinct planning for the Horsley Park – Mount Vernon Urban Investigation Area (UIA) a planning framework to manage future infrastructure needs.	Short to medium term	Fairfield City Council Greater Sydney Commission Department of Planning, Industry and Environment Relevant Federal and State Government Agencies	Number of meetings participated in as part of State Government working groups. Note: This action will be delivered through the Strategic Land Use Planning Service Statement as identified in Council's Delivery Program and Operational Plan.



PLANNING PRIORITY	ACTIONS	TIMEFRAME	RESPONSIBLE	MEASURES
	6.10 Council will collaborate with State Government agencies to identify and address short falls in infrastructure provision.	Short term and ongoing	Fairfield City Council	Number of meetings participated in as part of State Government working groups. Note: This action will be delivered through the Strategic Land Use Planning Service Statement as identified in Council's Delivery Program and Operational Plan.
Planning Priority 7 Leverage opportunities from major new district infrastructure and services and technological developments.	7.1 Council will work with the relevant State Government agencies to ensure transport decisions promote the best outcome for Fairfield City.	Ongoing	Fairfield City Council	Number of meetings participated in as part of State Government working groups. Note: This action will be delivered through the Strategic Land Use Planning Service Statement as identified in Council's Delivery Program and Operational Plan.
	7.2 Council will undertake a Transport Study which will align State Government transport initiatives and advocate for the best land use and transport outcomes for Fairfield City including the potential for new rail stations along the Parramatta to Western Sydney Airport passenger line.	Short term	Fairfield City Council	Project is completed through IN621-8 – Transport Study / Strategy (Accelerated LEP Review Program). Number of meetings participated in as part of State Government working groups. Note: This action will be delivered through the Strategic Land Use Planning Service Statement as identified in Council's Delivery Program and Operational Plan.



PLANNING PRIORITY	ACTIONS	TIMEFRAME	RESPONSIBLE	MEASURES
	<p>7.3 Council will investigate opportunities for the shared/adaptive use of open space and other community infrastructure.</p>	Short term and ongoing	Fairfield City Council	Number of meetings participated in as part of State Government working groups. Note: This action will be delivered through the Strategic Land Use Planning Service Statement as identified in Council's Delivery Program and Operational Plan.
	<p>7.4 Council will collaborate with State Government agencies to leverage the best opportunities including offsets and compensatory measures for the Fairfield City community arising from major infrastructure projects including (but not limited to): Western Sydney Freight Line, Parramatta to Western Sydney Airport rail link, Elizabeth Drive upgrade, T-way to Liverpool and Parramatta and strategic bus routes and upgrades to arterial roads.</p>	Ongoing	Fairfield City Council	Number of meetings participated in as part of State Government working groups. Note: This action will be delivered through the Strategic Land Use Planning Service Statement as identified in Council's Delivery Program and Operational Plan.
	<p>7.5 Council will work with the State Government to ensure that evolving District facilities (including Western Sydney Parkland, Fairfield Showground, Cabravale Leisure Centre and Aquatopia) continue to provide for both the local and wider community needs with improved connectivity within Fairfield City.</p>	Short term and ongoing	<p>Fairfield City Council</p> <p>Greater Sydney Commission</p> <p>Department of Planning, Industry and Environment</p> <p>Other relevant State Government Agencies</p>	Number of meetings participated in as part of State Government working groups. Note: This action will be delivered through the Strategic Land Use Planning Service Statement as identified in Council's Delivery Program and Operational Plan.



PLANNING PRIORITY	ACTIONS	TIMEFRAME	RESPONSIBLE	MEASURES
	<p>7.6 Council will respond to new technology/initiatives such as electronic charging, artificial intelligence, 5G and renewable energy.</p>	Short to medium term	Fairfield City Council	<p>Number of new technology and initiatives considered in regards to Fairfield LEP and DCP updates Note: This action will be delivered through the Strategic Land Use Planning Service Statement as identified in Council's Delivery Program and Operational Plan.</p>
	<p>7.7 Council will leverage off potential major Western Sydney Airport related transport infrastructure at Prairiewood Town Centre to evolve a new strategic centre or the City.</p>	Short to medium term	<p>Fairfield City Council</p> <p>Greater Sydney Commission</p> <p>Transport for NSW</p>	<p>Number of meetings participated in as part of State Government working groups. Note: This action will be delivered through the Strategic Land Use Planning Service Statement as identified in Council's Delivery Program and Operational Plan.</p>



ENVIRONMENTAL SUSTAINABILITY



- Planning Priority 8:** Protect areas of high natural value and environmental significance and improve the health of catchments and waterways.
- Planning Priority 9:** Realise the Parkland City Vision
- Planning Priority 10:** Adapt to natural hazards and environmental impacts

PLANNING PRIORITY	ACTIONS		TIMEFRAME	RESPONSIBLE	MEASURES
Planning Priority 8 Protect areas of high natural value and environmental significance and improve the health of catchments and waterways	8.1	Council will prepare a Biodiversity Strategy to identify and ensure the protection of areas of high natural value and environmental significance.	Short term	Fairfield City Council	Project is completed through IN621-10 – Biodiversity Strategy (Accelerated LEP Review Program).
	8.2	Council will review and update its LEP and DCP to reflect the outcomes of the Biodiversity Strategy and Open Space Strategy.	Short term	Fairfield City Council	Project is completed through IN621 – Fairfield LEP Review (Accelerated LEP Review Program).
	8.3	Council will review existing, and identify and map additional environmentally sensitive waterways and improve the overall catchment health and consider how LEP & DCP could support this.	Short term	Fairfield City Council	Project is completed through IN621 – Fairfield LEP Review (Accelerated LEP Review Program).
	8.4	Council will identify and investigate the cost benefits and funding sources for reinstating more natural conditions in highly modified urban waterways; inform local infrastructure contributions plans.	Medium to long term	Fairfield City Council Relevant State Government Agencies	Project is completed through the Existing Stormwater Management Major Program as identified in Council's Delivery Program and Operational Plan.
	8.5	Council will identify and map areas of conservation significance within the Horsley Park – Mt Vernon Urban Investigation Area.	Short term	Fairfield City Council	Number of meetings participated in as part of State Government working groups. Note: This action will be delivered through the Strategic Land Use Planning Service Statement as identified in Council's Delivery Program and Operational Plan.



PLANNING PRIORITY	ACTIONS	TIMEFRAME	RESPONSIBLE	MEASURES
	8.6 Council will identify opportunities to implement Water Sensitive Urban Design on public and private lands and implement measures that support water conservation.	Short to medium term	Fairfield City Council	Project is completed through IN621-3 – Urban Design Studies and IN621-6 – Public Domain Plans (Accelerated LEP Review Program).
Planning Priority 9 Realise the Parkland City Vision	9.1 Council will investigate opportunities for agri-business, farmers markets and food cop-ops as part of the Horsley Park – Mt Vernon UIA.	Short to medium term	Fairfield City Council	Number of meetings participated in as part of State Government working groups. Note: This action will be delivered through the Strategic Land Use Planning Service Statement as identified in Council's Delivery Program and Operational Plan.
	9.2 Council will identify approaches to expand urban tree canopy cover that address the low levels of existing canopy cover to improve and enhance amenity. Council will consider how this is best supported by updated LEP and DCP and other whole-of-Council programs.	Short to medium term	Fairfield City Council Greater Sydney Commission	Project is completed through IN621- 7 – Open Space Study / Strategy and IN621-10 – Biodiversity Strategy (Accelerated LEP Review Program).
	9.3 Council will implement the delivery of Green Grid priorities and identify how these could be best supported in updated LEP and DCP, including priority corridors outlined in the District Plan as well as any other Green Grid connections important to the local area.	Short to medium term	Fairfield City Council Greater Sydney Commission Department of Planning, Industry and Environment	Project is completed through IN621 – Fairfield LEP Review (Accelerated LEP Review Program).



PLANNING PRIORITY	ACTIONS		TIMEFRAME	RESPONSIBLE	MEASURES
	9.4	Council will contribute to the delivery of Blue Grid priorities and work to make Chipping Norton Lake swimmable again with a focus on improving the environmental qualities of the five principal creeks in the east of the City and the tributaries of South Creek catchment in the west.	Long term	Fairfield City Council Adjoining Councils with the relevant catchment. Greater Sydney Commission	Project is completed through the Strategic Land Use Planning Major Program as identified in Council's Delivery Program and Operational Plan.
	9.5	Council will review the land use planning provisions for waterways and riparian corridors and seek to rezone these from open space to environmental protection where this better reflects the environmental and scenic qualities of these areas.	Short term	Fairfield City Council	Project is completed through IN621 – 13 Prepare Planning Proposal (Accelerated LEP Review Program).
Planning Priority 10 Adapt to natural hazards and environmental impacts	10.1	Council will align its flood risk planning controls in the LEP and DCP so that the planning provisions are consistent with the planning controls in the upstream and downstream local government areas.	Short term	Fairfield City Council Department of Planning, Industry and Environment	Project is completed through IN621-13 – Prepare Planning Proposal (Accelerated LEP Review Program).
	10.2	Council will continue to undertake the Floodplain Risk Management Studies and Plans to manage areas susceptible to isolation or risk to property from floods.	Ongoing	Fairfield City Council Department of Planning, Industry and Environment	Completion of flood studies. Projects completed through the Flood Mitigation major Program in Council's Delivery Program and Operational Plan.



PLANNING PRIORITY	ACTIONS		TIMEFRAME	RESPONSIBLE	MEASURES
	10.3	Council will, in collaboration with other levels of government, identify approaches/ opportunities that support reducing emissions and managing energy, water and waste efficiently, in line with the pathways to net-zero emissions identified in the District Plan.	Ongoing	Fairfield City Council Greater Sydney Commission Department of Planning, Industry and Environment Relevant Federal and State Government Agencies	Project is completed through IN621 – Fairfield LEP Review (Accelerated LEP Review Program).
	10.4	Council will, as part of the future Public Domain Plans, respond to urban and natural hazards, particularly the urban heat island effect, and identify how to strengthen the resilience of important community assets and infrastructure.	Short term	Fairfield City Council	Project is completed through IN621-6 – Public Domain Plans (Accelerated LEP Review Program).
	10.5	Council will identify approaches to expand urban tree canopy cover that address the low levels of existing canopy cover , high levels of exposure to heat, and the vulnerability to extreme heat and heatwaves. Council will consider how this is best supported by updated LEP and DCP and other whole-of-council programs.	Short to medium term	Fairfield City Council Greater Sydney Commission	Project is completed through IN621 – Fairfield LEP Review, IN621-3 – Urban Design Studies and IN621-6 – Public Domain Plans (Accelerated LEP Review Program) and IN559 Tree Planting in Parks and Sportsfields and IN173 Street Tree Planting.

STRONG & RESILIENT ECONOMY



Planning Priority 11: Promote a robust economy which generates diverse services and job opportunities

Planning Priority 12: Plan for and manage urban services land

PLANNING PRIORITY	ACTIONS	TIMEFRAME	RESPONSIBLE	MEASURES
Planning Priority 11 Promote a robust economy which generates diverse services and job opportunities	11.1 Council will continue to collaborate with the Department of Planning, Industry and Environment to review data which informs the Employment Lands Monitor and will use this information to inform decisions about the supply and demand for employment land within Fairfield City.	Medium term and ongoing	Fairfield City Council Greater Sydney Commission Department of Planning, Industry and Environment	Data submitted per statutory requirements. Note: This action will be delivered through the Development Assessment Service Statement as identified in Council's Delivery Program and Operational Plan.
	11.2 Council will collaborate with Health Infrastructure NSW, Department of Planning and other relevant State agencies to investigate a new Health and/or Education Precinct around Fairfield Hospital in Prairiewood.	Short term and ongoing	Fairfield City Council Greater Sydney Commission Department of Planning, Industry and Environment Relevant Federal and State Government Agencies	Number of meetings participated in as part of State Government working groups. Note: This action will be delivered through the Social and Cultural Development Service Statement as identified in Council's Delivery Program and Operational Plan.
	11.3 Council will consider amendments to the LEP and DCP which facilitate new tourism opportunities and opportunities for tourist and visitor accommodation.	Short term	Fairfield City Council	Project is completed through IN621 Fairfield LEP Review and IN621-4 – Business Lands Study Review (Accelerated LEP Review Program).
	11.4 Council will undertake a review of the Business Lands Study which will consider business zoned land with Fairfield City to promote a robust economy and maximise job opportunities and address the employment targets in the Western City District Plan.	Short term	Fairfield City Council	Project is completed through IN621-4 – Business Lands Study Review (Accelerated LEP Review Program).



PLANNING PRIORITY	ACTIONS		TIMEFRAME	RESPONSIBLE	MEASURES
	11.5	Council will as part of the Transport Study investigate car parking management strategies/ approaches in town centres to ensure viable and accessible centres.	Short term	Fairfield City Council Transport for NSW	Project is completed through IN621 – Fairfield LEP Review and IN621-8 – Transport Study / Strategy (Accelerated LEP Review Program).
	11.6	Council will include provisions in the DCP to deliver improved urban design outcomes and improve the overall appearance of town centres.	Short term	Fairfield City Council	Project is completed through IN621-3 – Urban Design Studies (Accelerated LEP Review Program).
	11.7	Council will investigate new policies and DCP controls to encourage the night time economy in town centres.	Short term	Fairfield City Council	Project is completed through IN621-15 Fairfield DCP Review (Accelerated LEP Review Program).
	11.8	Council will undertake Urban Design Studies for its local centres that incorporate land use and transport approaches which provide both jobs and housing in close proximity to railway stations to promote the 30 minute city.	Short term	Fairfield City Council	Project is completed through IN621-3 – Urban Design Studies (Accelerated LEP Review Program).
Planning Priority 12 Plan for and manage urban services land	12.1	Council will continue to work with the GSC and adjoining Councils to review and manage urban services land, including addressing forecast increases in freight and logistics servicing need.	Short to medium term	Fairfield City Council Greater Sydney Commission Department of Planning, Industry and Environment	Number of meetings participated in as part of State Government working groups. Note: This action will be delivered through the Strategic Land Use Planning Service Statement as identified in Council's Delivery Program and Operational Plan.



PLANNING PRIORITY	ACTIONS	TIMEFRAME	RESPONSIBLE	MEASURES
	<p>12.2 Council will investigate opportunities for existing urban services land that may arise via rail sidings associated with the Western Sydney Freight Line concerning increased job numbers particularly those allied to the new economy.</p>	Short term	<p>Fairfield City Council</p> <p>Greater Sydney Commission</p> <p>Department of Planning, Industry and Environment</p>	<p>Number of meetings participated in as part of State Government working groups. Note: This action will be delivered through the Strategic Land Use Planning Service Statement as identified in Council's Delivery Program and Operational Plan.</p>
	<p>12.3 Council will investigate, as part of the structure planning process for the Rural Lands Urban Investigation Area, opportunities for new urban services land proximate to the Western Sydney Freight Line and Western Sydney Employment Area.</p>	Short term	<p>Fairfield City Council</p> <p>Greater Sydney Commission</p> <p>Department of Planning, Industry and Environment</p>	<p>Number of meetings participated in as part of State Government working groups. Note: This action will be delivered through the Strategic Land Use Planning Service Statement as identified in Council's Delivery Program and Operational Plan.</p>



GOOD GOVERNANCE – ADVOCACY & CONSULTATION



- Planning Priority 13:** Ensure a well-engaged and informed community
Planning Priority 14: Monitor and report on the delivery of the LSPS actions
Planning Priority 15: Review the LSPS to adapt to changing priorities and circumstances
Planning Priority 16: Advocate for and represent the Fairfield City community

PLANNING PRIORITY	ACTIONS	TIMEFRAME	RESPONSIBLE	MEASURES
Planning Priority 13 Ensure a well-engaged and informed community	13.1 Council will actively consult and engage the community on strategic land use plans and policies, utilising a diverse range of communication methods and in accordance with the requirements of the Environmental Planning & Assessment Act and Regulation and Council's community engagement strategy (currently in preparation) to ensure that the community's views are considered in decision making and planning.	Short term and ongoing	Fairfield City Council	Project is completed through IN621-14 – LEP and DCP Exhibition (Accelerated LEP Review Program). Number of community engagement activities delivered for major planning projects.
	13.2 Council will provide the local community with regular feedback about future plans and developments that impact the city.	Short term and ongoing	Fairfield City Council	Number of feedback provided in Council's City Life quarterly publication. Note: This action will be delivered through the Strategic Land Use Planning Service Statement as identified in Council's Delivery Program and Operational Plan.
	14.1 Council will actively monitor and report on the delivery of the LSPS actions through the Integrated Planning and Reporting (IP&R) Framework including reflecting the actions in the Fairfield City Plan (Community Strategic Plan), 4 year Delivery Program and 1 year Operational Plan.	Short term and ongoing	Fairfield City Council	Project is completed through IN621 – Fairfield LEP Review (Accelerated LEP Review Program).



PLANNING PRIORITY	ACTIONS		TIMEFRAME	RESPONSIBLE	MEASURES
	14.2	Council's Strategic Land Use Planning section will monitor and report on the delivery of LSPS actions through the IP&R process.	Short term and ongoing	Fairfield City Council	Action will be delivered through Council's Annual Reports as part of the Local Government Act requirement under the Integrated Planning and Reporting Framework.
	14.3	Council will ensure that forms accurately identify the information requirements for development applications to enable monitoring of targets and that this information is recorded in Council's internal Authority (database) to enable the efficient monitoring of development.	Short term	Fairfield City Council	Project is completed through the Development Assessment Service Statement as identified in Council's Delivery Program and Operational Plan.
	14.4	Council will implement a system that enables collected data sets to be extracted for evaluation in both mapped and tabular form for relevant LSPS actions and review.	Short term	Fairfield City Council	Project is completed through IN621-16 – Council's Urban Planning Performance (Accelerated LEP Review Program).
Planning Priority 15 Review the LSPS to adapt to changing priorities & circumstances.	15.1	Council will undertake a review and update the LSPS (including the themes and planning priorities) at a minimum as required by the Environmental Planning and Assessment Act and Regulation.	Medium term	Fairfield City Council	Project is completed through the Strategic Land Use Planning Major Program as identified in Council's Delivery Program and Operational Plan.



PLANNING PRIORITY	ACTIONS		TIMEFRAME	RESPONSIBLE	MEASURES
Planning Priority 16 Advocate for and represent the Fairfield City community.	16.1	Council will continue to develop and maintain effective partnerships between Government agencies, through the Western Sydney Planning Partnership and other forums/groups, and with community groups to achieve the planning priorities and actions identified in the Fairfield City Local Strategic Planning Statement.	Short term and ongoing	Fairfield City Council	Number of meetings participated in as part of State Government working groups. Note: This action will be delivered through the Strategic Land Use Planning Service Statement as identified in Council's Delivery Program and Operational Plan.
	16.2	Council will undertake advocacy on behalf of the community in relation to land use and transport planning matters to achieve the Vision of the LSPS.	Short term and ongoing	Fairfield City Council	Number of meetings participated in as part of State Government working groups. Note: This action will be delivered through the Strategic Land Use Planning Service Statement as identified in Council's Delivery Program and Operational Plan.