



Natural Fairfield

Fairfield is located on the Cumberland Plain. Over the last 100 years the Cumberland Plain has deteriorated to a state that it is now considered critically endangered.

The majority of bushland left in the Fairfield City area is along the creek lines. The creeks form an important corridor for the flow of genetic material and fauna from the larger sites such as Prospect Reservoir and Western Sydney Parklands to the Georges River.

Fairfield City Council is regenerating the bushland along the creeks as well as bushland remnants. By becoming a volunteer you can help regenerate these areas and maintain the natural beauty of Fairfield City.

How to become a volunteer

You can join an existing group or start one of your own. To become a volunteer please download the Volunteer Application Form at:

www.fairfieldcity.nsw.gov.au/environment

Please email the form to:
Attention Natural Resources Team
environment@fairfieldcity.nsw.gov.au

Or post to:

Natural Resources
Fairfield City Council
P.O. Box 21
FAIRFIELD NSW 1860

More information

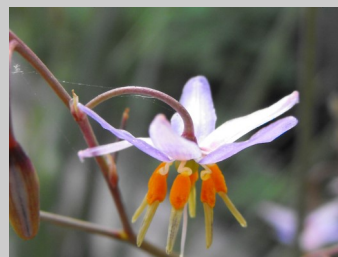
For more information on becoming a volunteer or for enquiries relating to natural resources, please contact Fairfield City Council:

Phone: (02) 9725 0222

Email:
environment@fairfieldcity.nsw.gov.au
With Attention Natural Resources Team

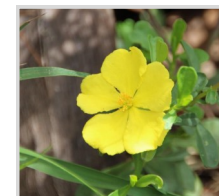
Website: www.fairfieldcity.nsw.gov.au

Follow us on



BECOME AN ENVIRONMENTAL VOLUNTEER

Be part of the action



Make a difference to the environment and experience conservation in action by becoming a volunteer

Something for everyone

The bushland areas in Fairfield City are valuable for recreational and environmental purposes. They allow us to escape the pressures of everyday city life and relax in nature as well as providing homes for a range of plants and animals.

The volunteer program is a way that the community can participate in maintaining the biodiversity in the Fairfield City area.

Being an environmental volunteer is for all ages and abilities. You can meet like-minded members of the community whilst learning about the environment.

To get involved, please review the timetable and choose a volunteer group that interests you. No previous experience is necessary, just enthusiasm and a willingness to make new friends.



Fairfield Creeks and Wetlands Group

Meets: every six weeks on a Thursday

Time: 6.30 - 8.30pm

Location: Fairfield City Council Administration Centre, 86 Avoca Road, Wakeley

Activities: habitat restoration, wildlife monitoring, tree planting, Bushcare and clean-up days.

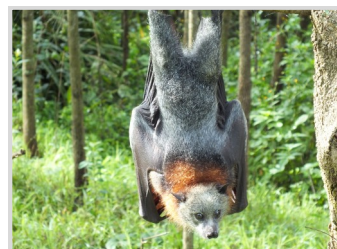
Native Community Nursery

Meets: every Tuesday, Wednesday, Thursday and the second Saturday of the month

Time: 8.30am - noon

Location: Nalawala Sustainability Hub, Fairfield Showground, Moonlight Street, Prairiewood

Activities: propagation and nursery works



The Indigenous Flora Park Bushcare Group

Meets: third Saturday of the month

Time: 9am - noon

Location: Fairfield Indigenous Flora Park, Christie Street, Prairiewood

Activities: Bushcare activities, animal rescue, tree planting, wildlife monitoring and seed collecting.

Other Council organised environmental events

Meets: Council holds monthly educational activities, wildlife monitoring and planting events

Time: varies depending on the event

Location: please visit

www.fairfieldcity.nsw.gov.au/events
or phone (02) 9725 0222

