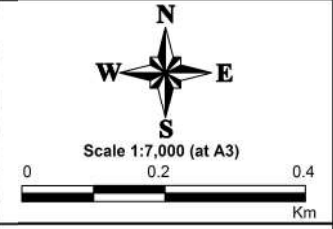


LEGEND

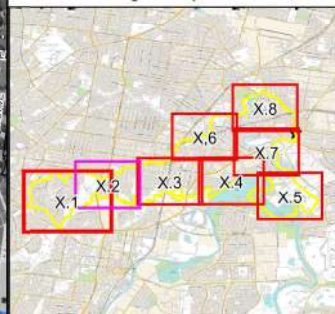
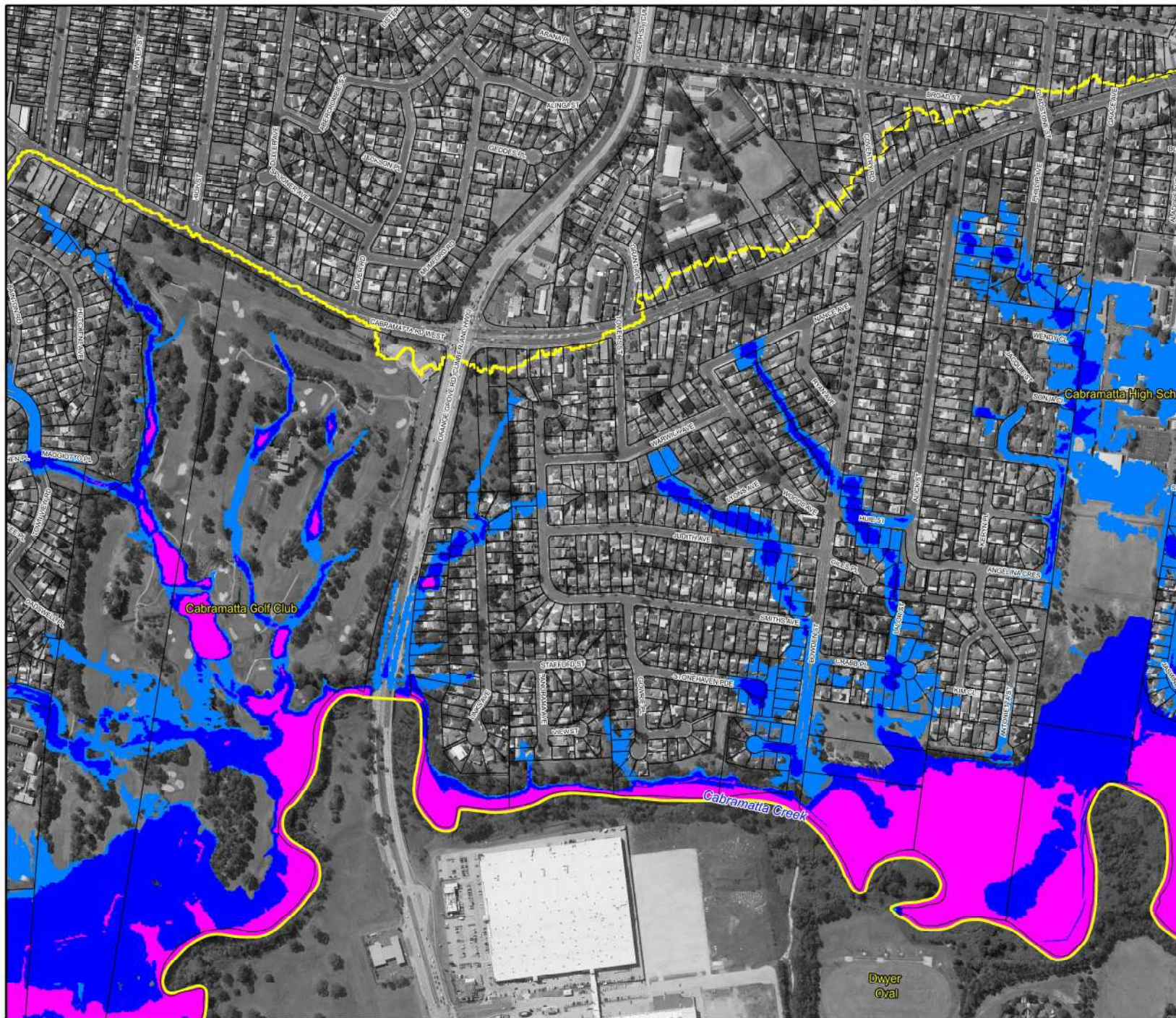
- High Flood Risk Precinct
- Medium Flood Risk Precinct
- Low Flood Risk Precinct

Notes:
Only depths greater than 0.15m are shown in this figure. Extent of inundation is an approximation only.
Aerial photograph dated 2015



**Figure 33.1:
Flood Risk Precincts**

Prepared By:
Catchment Simulation Solutions
Suite 2.01, 210 George St
Sydney, NSW 2000
File Name: Fig33.1 - Flood Risk
Precincts.wor



LEGEND

- High Flood Risk Precinct
- Medium Flood Risk Precinct
- Low Flood Risk Precinct

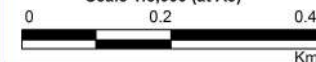
Notes:

Only depths greater than 0.15m are shown in this figure. Extend of inundation is an approximation only.

Aerial photograph dated 2015



Scale 1:5,000 (at A3)

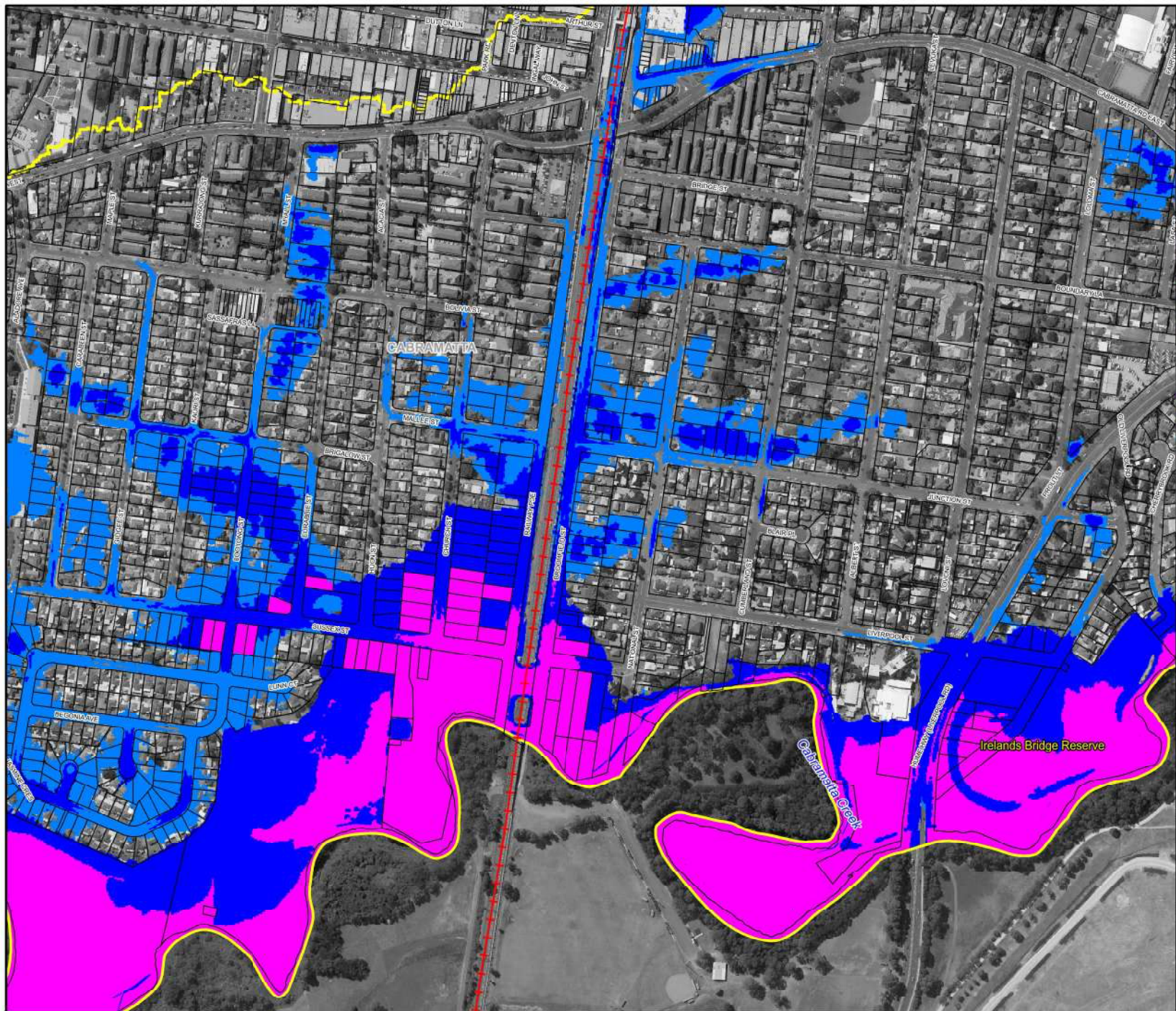


**Figure 33.2:
Flood Risk Precincts**

Prepared By:

Catchment Simulation Solutions
Suite 2.01, 210 George St
Sydney, NSW 2000

File Name: Fig33.2 - Flood Risk
Precincts.wor



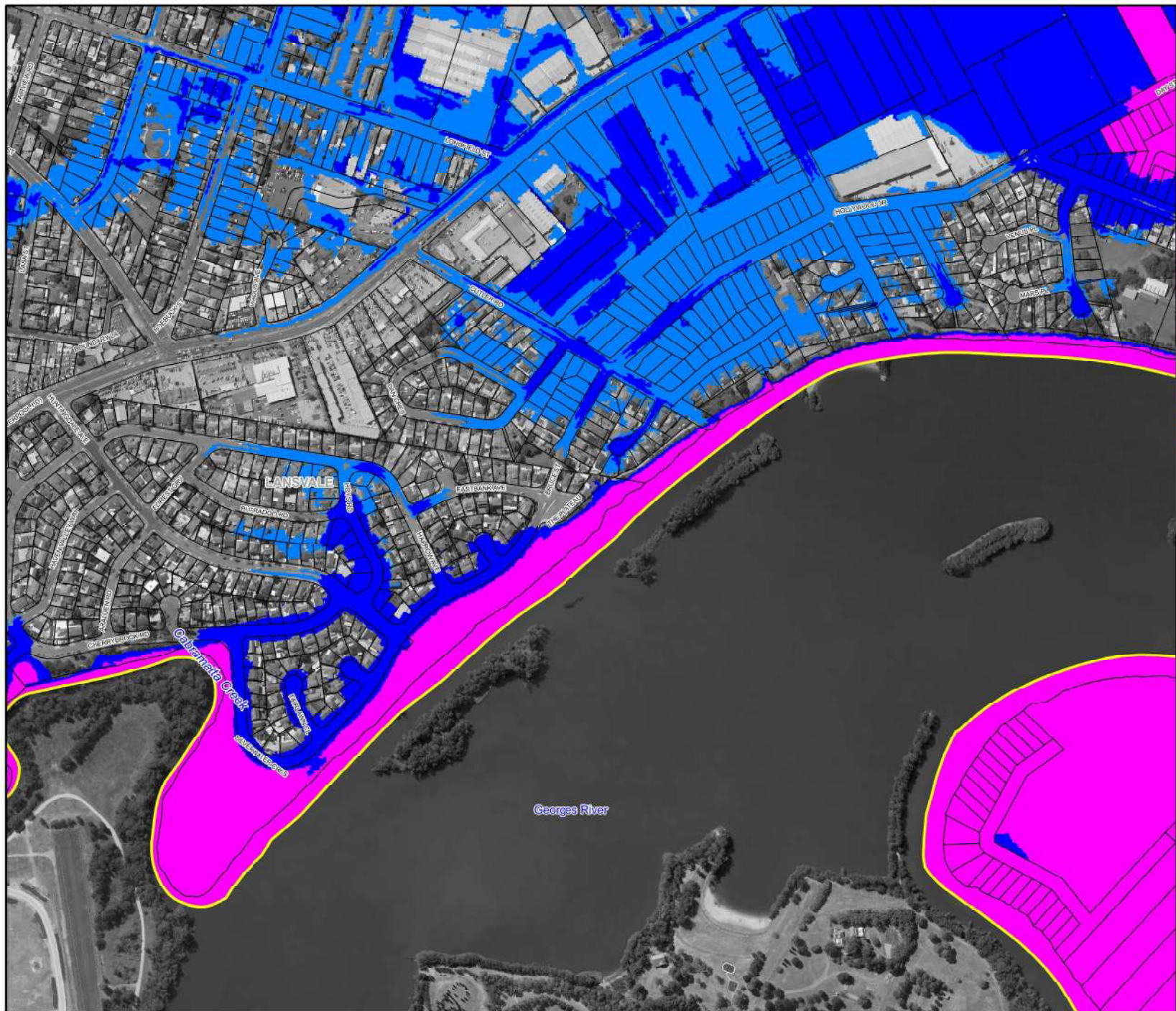
LEGEND

- High Flood Risk Precinct
- Medium Flood Risk Precinct
- Low Flood Risk Precinct

Notes:
 Only depths greater than 0.15m are shown in this figure. Extend of inundation is an approximation only.
 Aerial photograph dated 2015

**Figure 33.3:
Flood Risk Precincts**

Prepared By:
 Catchment Simulation Solutions
 Suite 2.01, 210 George St
 Sydney, NSW 2000
 File Name: Fig33.3 - Flood Risk Precincts.wor



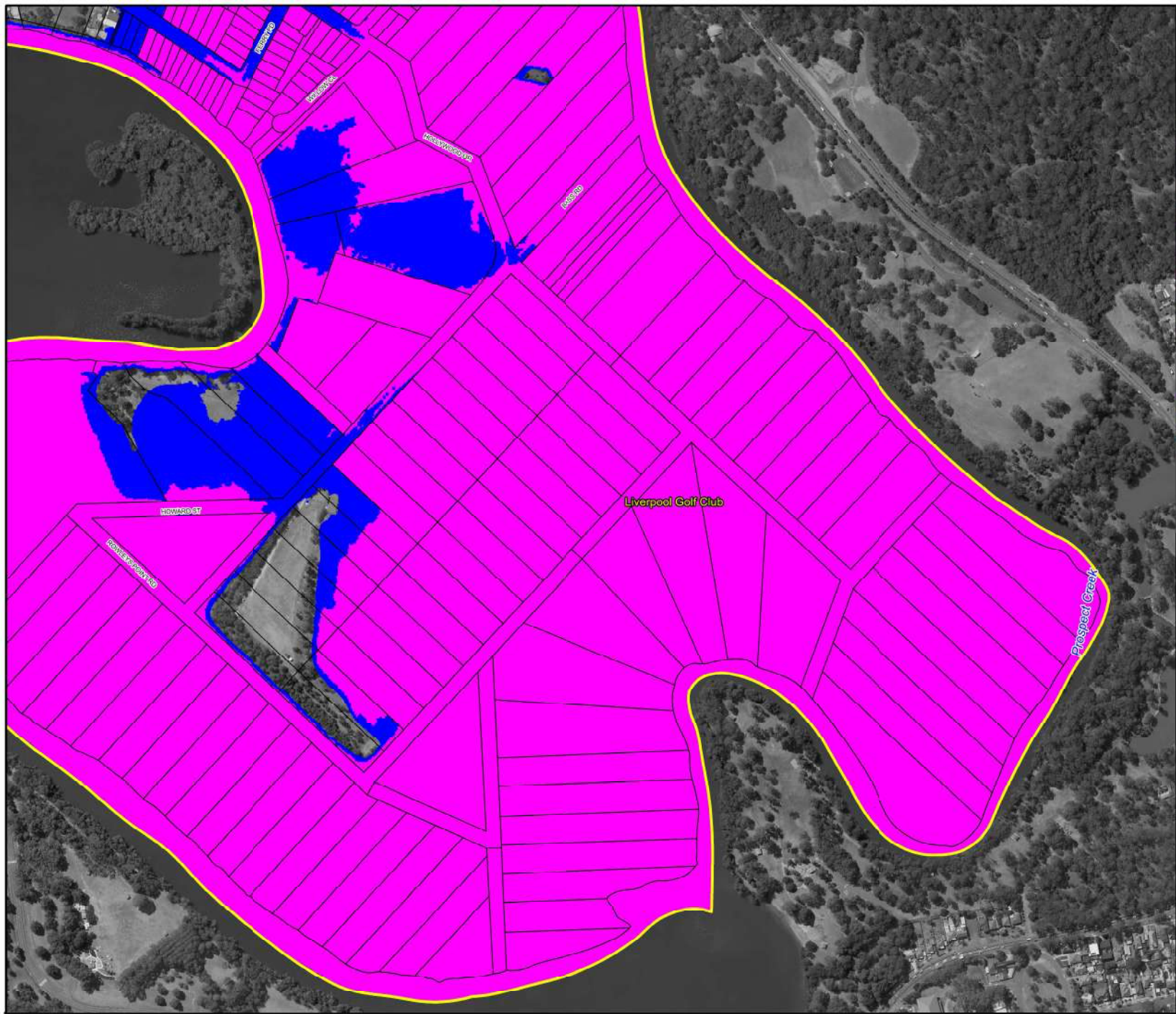
LEGEND

- High Flood Risk Precinct
- Medium Flood Risk Precinct
- Low Flood Risk Precinct

Notes:
Only depths greater than 0.15m are shown in this figure. Extend of inundation is an approximation only.
Aerial photograph dated 2015

**Figure 33.4:
Flood Risk Precincts**

Prepared By:
Catchment Simulation Solutions
 Suite 2.01, 210 George St
 Sydney, NSW 2000
 File Name: Fig33.4 - Flood Risk Precincts.wor



LEGEND

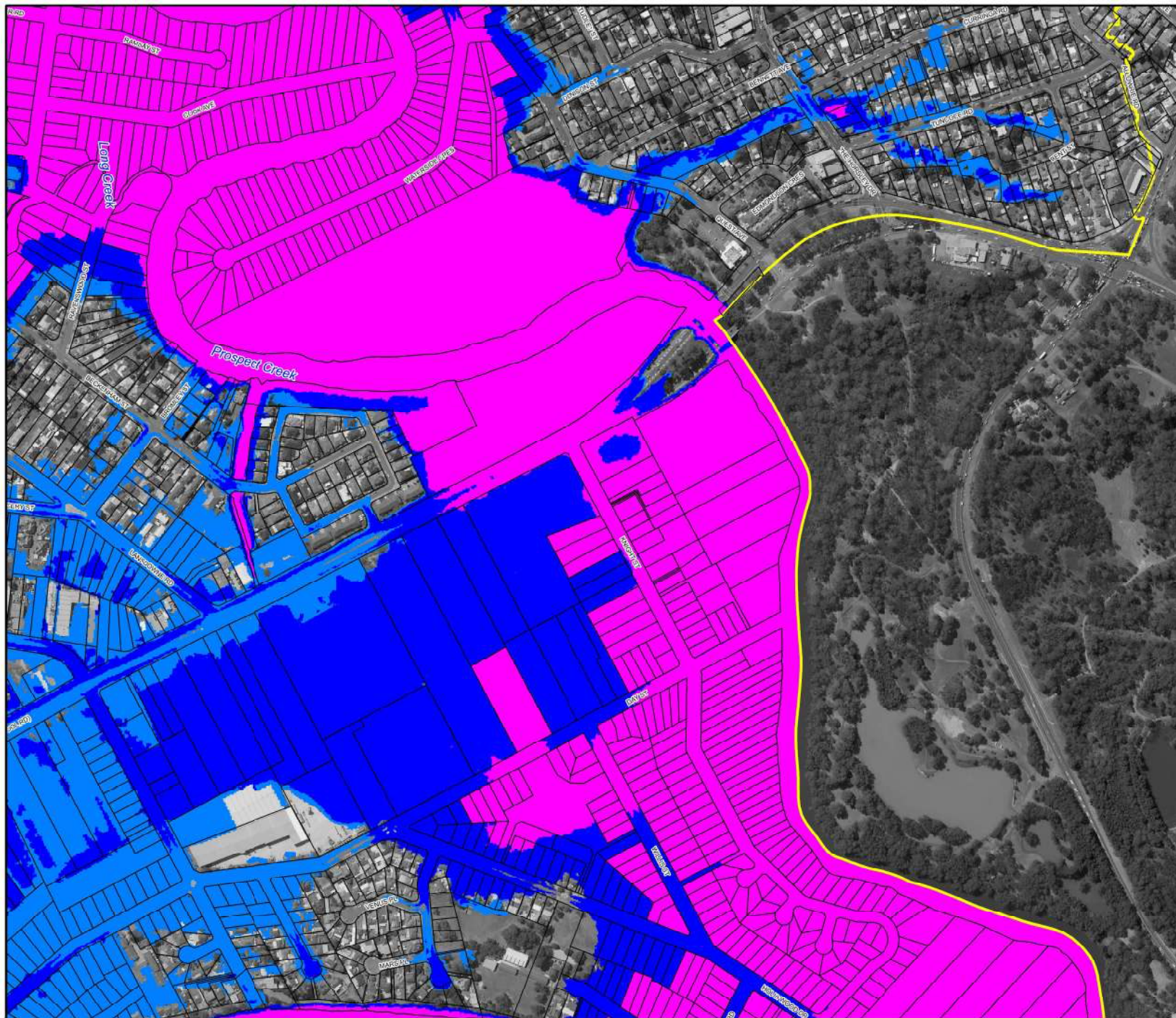
- High Flood Risk Precinct
- Medium Flood Risk Precinct
- Low Flood Risk Precinct

Notes:
Only depths greater than 0.15m are shown in this figure. Extend of inundation is an approximation only.
Aerial photograph dated 2015

Scale 1:5,000 (at A3)

**Figure 33.5:
Flood Risk Precincts**

Prepared By:
Catchment Simulation Solutions
 Suite 2.01, 210 George St
 Sydney, NSW 2000
 File Name: Fig33.5 - Flood Risk Precincts.wor



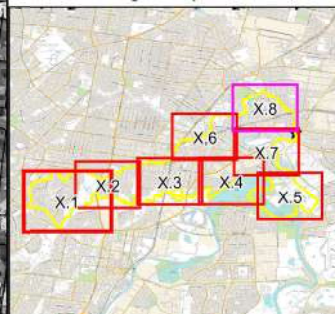
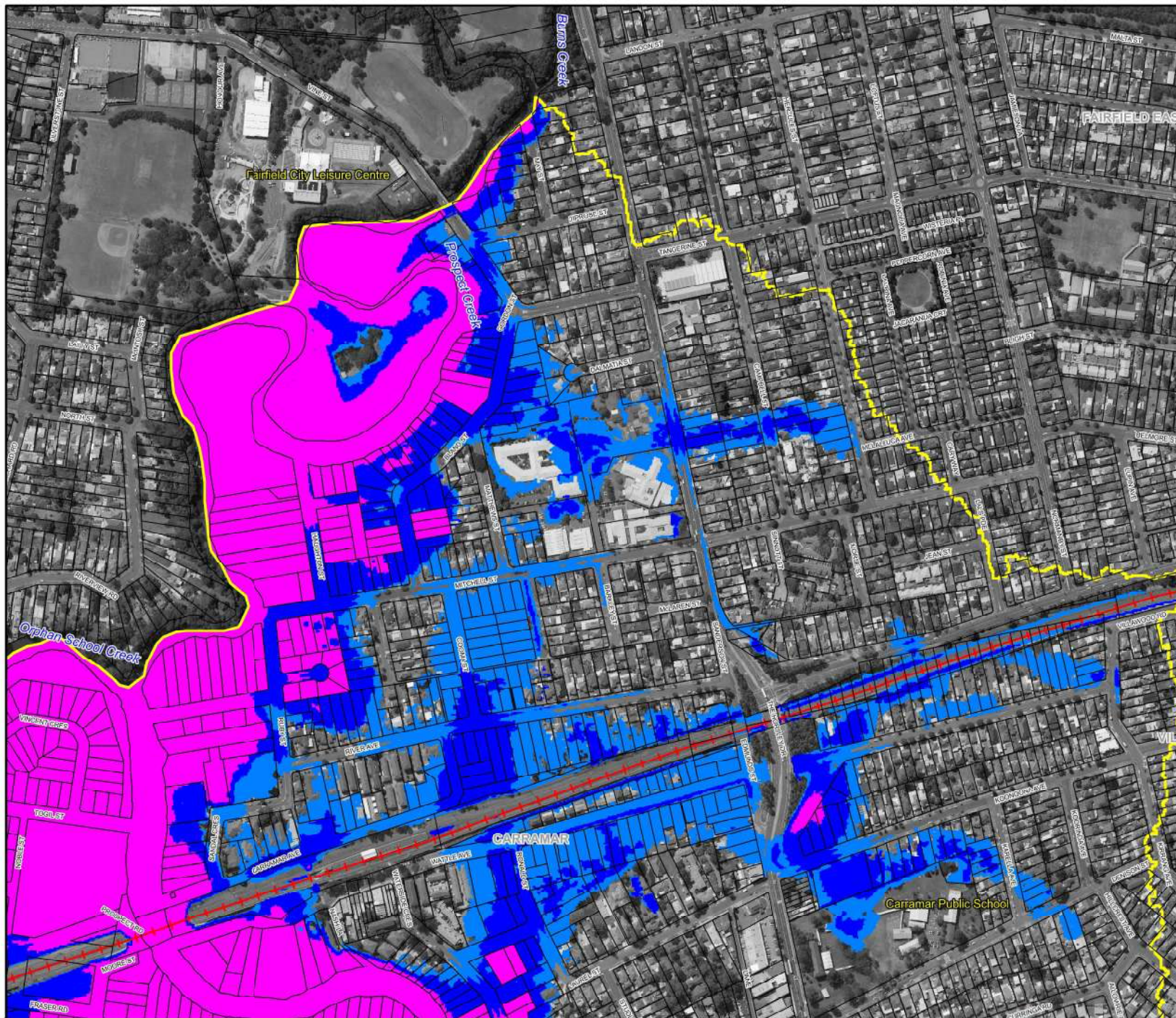
LEGEND

- High Flood Risk Precinct
- Medium Flood Risk Precinct
- Low Flood Risk Precinct

Notes:
Only depths greater than 0.15m are shown in this figure. Extent of inundation is an approximation only.
Aerial photograph dated 2015

**Figure 33.7:
Flood Risk Precincts**

Prepared By:
 Catchment Simulation Solutions
 Suite 2.01, 210 George St
 Sydney, NSW 2000
 File Name: Fig33.7 - Flood Risk Precincts.wor



LEGEND

- High Flood Risk Precinct
- Medium Flood Risk Precinct
- Low Flood Risk Precinct

Notes:

Only depths greater than 0.15m are shown in this figure. Extend of inundation is an approximation only.

Aerial photograph dated 2015



Scale 1:5,000 (at A3)

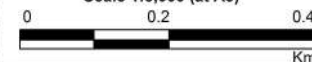


Figure 33.8:
Flood Risk Precincts

Prepared By:

Catchment Simulation Solutions
Suite 2.01, 210 George St
Sydney, NSW 2000

File Name: Fig33.8 - Flood Risk
Precincts.wor